

Anti-phospho-AKT1/2/3 (Ser473)

Rabbit Polyclonal Antibody

Catalog # A16-65BR

Lot # J1178-30

Cited Applications

WB, IHC

Suggested Dilutions:

WB: 1:500-1:1000 IHC: 1:50-1:100

Ideal working dilutions for each application should be empirically determined by the investigator.

Specificity

Recognizes the AKT1/2/3 protein phosphorylated at serine 473

Cross Reactivity

Human, Mouse and Rat

Host/Isotype/Clone#

Rabbit, IgG

Immunogen

Synthetic phospho-peptide corresponding to amino acid residues surrounding Ser473

Formulation

PBS (pH 7.4) 150mM NaCl, 0.02% sodium azide and 50% glycerol.

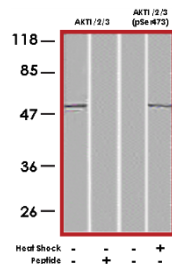
Scientific Background

The AKT family of serine/threonine kinases includes AKT1, AKT2 and AKT3. They are activated in response to diverse stimuli such as hormones, growth factors and extracellular matrix components. AKTs are involved in glucose metabolism, transcription, survival, cell proliferation, angiogenesis, and cell motility (1). AKT1 is frequently overexpressed and active in many types of human cancers including cancers of colon, breast, brain, pancreas and prostate as well as lymphomas and leukemias (2). AKT is activated by phosphorylation at Thr308 and Ser473 by PDK1 and PDK2 respectively.

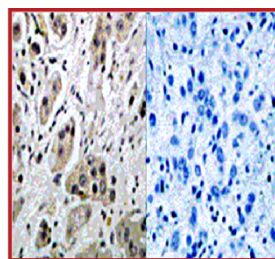
References

1. Coffey, P.J. et al: Protein kinase B (c-Akt): a multifunctional mediator of phosphatidylinositol 3-kinase activation. *Biochem J.* 1998 Oct 1; 335 (Pt 1):1-13.
2. Anderson, K.E. et al: Translocation of PDK-1 to the plasma membrane is important in allowing PDK-1 to activate protein kinase B. *Curr Biol.* 1998 Jun 4;8(12): 684-91.

Sample Data



Western blots from HeLa cells treated with heat shock using AKT1/2/3 antibody (lanes 1 and 2) and anti-phospho-AKT1/2/3 (Ser473) antibody (lanes 3 and 4).



P-Peptide: - +

Immunohistochemical analysis of paraffin-embedded human breast carcinoma tissue using anti-phospho-AKT1/2/3 (Ser473) antibody.

Anti-phospho-AKT1/2/3 (Ser473)

Rabbit Polyclonal Antibody

Catalog Number

A16-65BR

Specific Lot Number

J1178-30

Purification Affinity chromatography

Stability 1yr at -20°C from date of shipment

Storage & Shipping

Store product at -20°C. For optimal storage, aliquot antibody into smaller quantities after centrifugation and store at recommended temperature. For optimal performance, avoid repeated handling and multiple freeze/thaw cycles. Product shipped on ice packs.

To place your order, please contact us by phone 1-(604)-232-4600, fax 1-604-232-4601 or by email: orders@signalchem.com
www.signalchem.com

FOR IN VITRO RESEARCH PURPOSES ONLY. NOT INTENDED FOR USE IN HUMAN OR ANIMALS.