

Anti-phospho-Tau (Thr205)

Rabbit Polyclonal Antibody

Catalog # T08-365BR

Lot # J1178-24

Cited Applications

WB

Suggested Dilutions:

WB: 1:500-1:1000

Ideal working dilutions for each application should be empirically determined by the investigator.

Specificity

Recognizes the Tau protein phosphorylated at threonine 205

Cross Reactivity

Human, Mouse and Rat

Host/Isotype/Clone#

Rabbit, IgG

Immunogen

Synthetic phospho-peptide corresponding to amino acid residues surrounding Thr205

Formulation

PBS (pH 7.4) 150mM NaCl, 0.02% sodium azide and 50% glycerol.

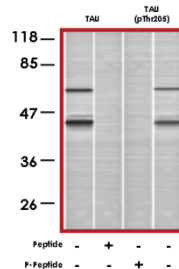
Scientific Background

The Tau family of proteins interacts directly with microtubules to stabilize macromolecular structures. Microtubule association is dependent on the phosphorylation state of Tau proteins (1). Hyperphosphorylated Tau proteins are implicated in Alzheimer's disease (AD) where it is a major component of the offending protein aggregates. Other components of the aggregates include misfolded proteins such as β -amyloid precursor protein (β APP), ubiquitin, and various chaperones and protein kinases. Malfunctioning Tau proteins are associated with microtubule disintegration and collapse of the neuronal transport system (2).

References

1. Zilka, N., et al. Truncated tau from sporadic Alzheimer's disease suffices to drive neurofibrillary degeneration in vivo. *FEBS Lett.* 2006; 508: 3582-3588.
2. Rial, A. et al: Calcium Dyshomeostasis in beta-amyloid and tau-bearing skeletal myotubes. *J. Biol. Chem.*, 2004; 279: 3524-3532.

Sample Data



Western blot analysis of extracts mouse brain using Tau antibody (lanes 1 and 2) and anti-phospho-Tau (Thr205) antibody (lanes 3 and 4).

Anti-phospho-Tau (Thr205)

Rabbit Polyclonal Antibody

Catalog Number

T08-365BR

Specific Lot Number

J1178-24

Purification

Affinity chromatography

Stability

1yr at -20°C from date of shipment

Storage & Shipping

Store product at -20°C. For optimal storage, aliquot antibody into smaller quantities after centrifugation and store at recommended temperature. For optimal performance, avoid repeated handling and multiple freeze/thaw cycles. Product shipped on ice packs.

To place your order, please contact us by phone 1-(604)-232-4600, fax 1-604-232-4601 or by email: orders@signalchem.com
www.signalchem.com

FOR IN VITRO RESEARCH PURPOSES ONLY. NOT INTENDED FOR USE IN HUMAN OR ANIMALS.