

Anti-phospho-PLCG2 (Tyr753)

Rabbit Polyclonal Antibody

Catalog # P41-465R

Lot # J1178-21

Cited Applications

WB

Suggested Dilutions:

WB: 1:500-1:1000

Ideal working dilutions for each application should be empirically determined by the investigator.

Specificity

Recognizes the MEK1/2 protein phosphorylated at tyrosine 753

Cross Reactivity

Human, Mouse and Rat

Host/Isotype/Clone#

Rabbit, IgG

Immunogen

Synthetic phospho-peptide corresponding to amino acid residues surrounding Tyr753

Formulation

PBS (pH 7.4) 150mM NaCl, 0.02% sodium azide and 50% glycerol.

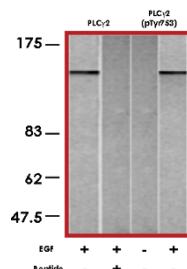
Scientific Background

Phospholipase C gamma 2 (PLCG2) plays an important role in the intracellular transduction of messages from active receptor-mediated tyrosine kinases. PLCG2 catalyzes the formation of two second-messenger molecules inositol 1, 4, 5-trisphosphate and diacylglycerol from phosphatidylinositol 4, 5-bisphosphate. PLCG2 is phosphorylated at Tyr753 by LCK and BTK (1,2). Increased PLCG2 expression is observed in B-cells following treatment with serum, TPA, retinoic acid, or 5-azacytidine (3).

References

1. Watanabe D. et al: Four tyrosine residues in phospholipase C-gamma 2, identified as Btk-dependent phosphorylation sites, are required for B cell antigen receptor-coupled calcium signaling. *J Biol Chem.* 2001 Oct 19;276(42):38595-601.
2. Ozdener F. et al: Activation of phospholipase Cgamma2 by tyrosine phosphorylation. *Mol Pharmacol.* 2002 Sep;62(3):672-9.
3. Kang J S. et al: Cloning and functional analysis of the hematopoietic cell-specific phospholipase C(gamma)2 promoter. *FEBS Lett.* 1996 Dec 9;399(1-2):14-20.

Sample Data



Western blot analysis of extracts from A431 cells untreated or treated with EGF (200ng/ml, 5min) using PLCG2 antibody (lanes 1 and 2) and anti-phospho-PLCG2 (Tyr753) antibody (lanes 3 and 4).

Anti-phospho-PLCG2 (Tyr753)

Rabbit Polyclonal Antibody

Catalog Number

P41-465R

Specific Lot Number

J1178-21

Purification

Affinity chromatography

Stability

1yr at -20°C from date of shipment

Storage & Shipping

Store product at -20°C. For optimal storage, aliquot antibody into smaller quantities after centrifugation and store at recommended temperature. For optimal performance, avoid repeated handling and multiple freeze/thaw cycles. Product shipped on ice packs.

To place your order, please contact us by phone 1-(604)-232-4600, fax 1-604-232-4601 or by email: orders@signalchem.com
www.signalchem.com

FOR IN VITRO RESEARCH PURPOSES ONLY. NOT INTENDED FOR USE IN HUMAN OR ANIMALS.