

## KAT3B (EP300) Protein

Recombinant human protein expressed in Sf9 cells

**Catalog # K312-31BG**

Lot # 1279-3

### Product Description

Recombinant human KAT3B (EP300) (532-1153; contains the catalytic domain) was expressed by baculovirus in Sf9 insect cells using an N-terminal GST tag. The gene accession number is [NM\\_001429](#).

### Gene Aliases

KAT3B; EP300; p300

### Formulation

Recombinant protein stored in 50mM Tris-HCl, pH 7.5, 150mM NaCl, 10mM glutathione, 0.1mM EDTA, 0.25mM DTT, 0.1mM PMSF, and 25% glycerol.

### Storage and Stability

Store product at -70°C. For optimal storage, aliquot target into smaller quantities after centrifugation and store at recommended temperature. For most favorable performance, avoid repeated handling and multiple freeze/thaw cycles.

### Scientific Background

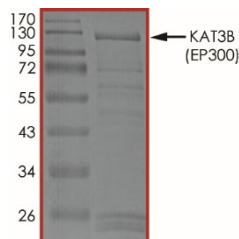
KAT3B (also known as EP300) encodes the adenovirus E1A-associated cellular p300 transcriptional co-activator protein that functions as a histone acetyltransferase. KAT3B regulates transcription via chromatin remodeling and is important in the processes of cell proliferation and differentiation. KAT3B binding is a highly accurate process and can be used for identifying enhancers and their associated activities (1). KAT3B is also useful in the study of the role of tissue-specific enhancers in human biology and diseases on a genome wide scale. Defects in KAT3B gene are a cause of Rubinstein-Taybi syndrome that play an important role in epithelial cancer and act as a classic tumor suppressor gene (2).

### References

1. Visel, A. et.al: ChIP-seq accurately predicts tissue-specific activity of enhancers. *Nature* 457: 854-858, 2009.
2. Gayther, S. A. et.al: Mutations truncating the EP300 acetylase in human cancers. *Nature Genet.* 24: 300-303, 2000.

To place your order, please contact us by phone 1-(604)-232-4600, fax 1-604-232-4601 or by email: [orders@signalchem.com](mailto:orders@signalchem.com)  
[www.signalchem.com](http://www.signalchem.com)

### Purity



The purity of KAT3B (EP300) was determined to be **>75%** by densitometry. Approx. MW **120kDa**.

## KAT3B (EP300) Protein

Recombinant human protein expressed in Sf9 cells

Catalog #	K312-31BG
Lot #	1279-3
Purity	>75%
Concentration	0.1 µg/µl
Stability	1yr at -70°C from date of shipment
Storage & Shipping	Store product at -70°C. For optimal storage, aliquot target into smaller quantities after centrifugation and store at recommended temperature. For most favorable performance, avoid repeated handling and multiple freeze/thaw cycles. Product shipped on dry ice.

**FOR IN VITRO RESEARCH PURPOSES ONLY. NOT INTENDED FOR USE IN HUMAN OR ANIMALS.**

# MATERIAL SAFETY DATA SHEET

---

## Article 1 - Product Identification and Use

---

**Product Name: KAT3B (EP300) Protein**

**Catalog # K312-31BG**

*This product is sold only for research use by qualified laboratory personnel, and is not to be used as a drug, medical device, food additive, cosmetic, nor household chemical. It is not to be used in diagnostic, therapeutic, consumer, agricultural, nor pesticidal applications.*

Manufacturer's Name: SignalChem Pharmaceuticals Inc.  
Street Address: 110-13120 Vanier Place  
City, Prov. Postal Code: Richmond, BC, V6V 2J2  
Fax: 604-232-4601  
EMERGENCY PHONE: 604-232-4600

---

## Article 2 - Hazardous Ingredients

---

NOT AVAILABLE. We are not aware of any hazards associated with this product or its ingredients, but the chemical, physical, and toxicological properties of this product have not been investigated thoroughly. Observe normal laboratory precautions.

---

## Article 3 - Physical Data

---

This product consists of purified protein in Tris-HCl buffer shipped on dry ice. The physical properties of this product have not been investigated thoroughly.

---

## Article 4 - Fire and Explosion Hazard

---

NOT APPLICABLE

---

## Article 5 - Reactivity Data

---

NOT APPLICABLE

---

## Article 6 - Toxicologically Data

---

May be harmful by inhalation, ingestion, or skin absorption. The toxicological properties of this product have not been investigated thoroughly. Exercise due caution.

---

## Article 7 - Preventative Measures

---

Wear chemical safety goggles and compatible chemical-resistant gloves. Avoid inhalation, contact with eyes, skin or clothing.

\*\*\*\*\*MULTIPLE COMPONENT SPILL OR LEAK PROCEDURES\*\*\*\*\*

- Wear protective equipment.
  - Absorb on sand or vermiculite and place in closed containers for disposal.
  - Observe all federal, state and local environmental regulations.
- 

## Article 8 - First Aid Measures

---

- If swallowed, wash out mouth with water, provided person is conscious. Call a physician.
  - In case of skin contact, flush with copious amounts of water for at least 15 minutes. Remove contaminated clothing and shoes. If a rash or other irritation develops, call a physician.
  - If inhaled, remove to fresh air. If breathing becomes difficult, call a physician.
  - In case of eye contact, flush with copious amounts of water for at least 15 minutes while separating the eyelids with fingers. Call a physician.
- 

## Article 9 - Preparation

---

Prepared By: Jun Yan

Phone #: 1-866-954-6273

The above information is believed to be correct but does not purport to be all-inclusive and shall be used only as a guide. SignalChem shall not be held liable for any damage resulting from handling or from contact with the above product. See the Technical Specification, Packing Slip, Invoice, and Product Catalog for additional terms and conditions of sale.

To place your order, please contact us by phone 1-(604)-232-4600, fax 1-604-232-4601 or by email: [orders@signalchem.com](mailto:orders@signalchem.com)  
[www.signalchem.com](http://www.signalchem.com)

**FOR IN VITRO RESEARCH PURPOSES ONLY. NOT INTENDED FOR USE IN HUMAN OR ANIMALS.**