

PAD3 Protein

Full length recombinant human protein expressed in Sf9 cells

Catalog # P312-30CG

Lot # I255-2

Product Description

Recombinant full-length human PAD3 was expressed by baculovirus in Sf9 insect cells using an N-terminal GST tag. The gene accession number is [NM_016233](#).

Gene Aliases

MGC126307; MGC126308; PADI3; PDI3

Formulation

Recombinant protein stored in 50mM Tris-HCl, pH 7.5, 50mM NaCl, 10mM glutathione, 0.1mM EDTA, 0.25mM DTT, 0.1mM PMSF, 25% glycerol.

Storage and Stability

Store product at -70°C. For optimal storage, aliquot target into smaller quantities after centrifugation and store at recommended temperature. For most favorable performance, avoid repeated handling and multiple freeze/thaw cycles.

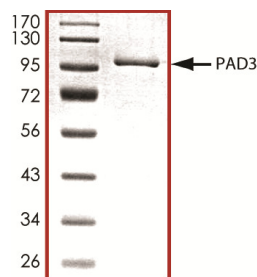
Scientific Background

PAD3 is a member of the peptidyl arginine deiminase family of enzymes, which catalyze the post-translational deimination of proteins by converting arginine residues into citrullines in the presence of calcium ions. PAD3 modulates hair structural proteins, such as filaggrin in the hair follicle and trichohyalin in the inner root sheath, during hair follicle formation. It converts arginine to citrulline in filaggrin at a faster rate than it does in trichohyalin (1). Together with the type I enzyme (PAD1), PAD3 play a role in terminal differentiation of the epidermis.

References

1. Kanno, T. et.al : Human peptidylarginine deiminase type III: molecular cloning and nucleotide sequence of the cDNA, properties of the recombinant enzyme, and immunohistochemical localization in human skin. J. Invest. Derm. 115: 813-823, 2000.

Purity



The purity was determined to be **>95%** by densitometry. Approx. MW **97 kDa**.

PAD3 Protein

Full length recombinant human protein expressed in Sf9 cells

Catalog Number	P312-30CG
Specific Lot Number	I255-2
Purity	>95%
Concentration	0.1 µg/µl
Stability	1yr At -70°C from date of shipment
Storage & Shipping	Store product at -70°C. For optimal storage, aliquot target into smaller quantities after centrifugation and store at recommended temperature. For most favorable performance, avoid repeated handling and multiple freeze/thaw cycles. Product shipped on dry ice.

To place your order, please contact us by phone 1-(604)-232-4600, fax 1-604-232-4601 or by email: orders@signalchem.com
www.signalchem.com

FOR IN VITRO RESEARCH PURPOSES ONLY. NOT INTENDED FOR USE IN HUMAN OR ANIMALS.