

PKA α , Active

Full-length recombinant protein expressed in Sf9 cells

Catalog # P51-10G

Lot # 1121-2

Product Description

Recombinant full-length human PKA α was expressed by baculovirus in Sf9 insect cells using an N-terminal GST tag. The gene accession number is [NM_002730](#).

Gene Aliases

PRKACA, MGC48865

Formulation

Recombinant protein stored in 50mM Tris-HCl, pH 7.5, 150mM NaCl, 10mM glutathione, 0.1mM EDTA, 0.25mM DTT, 0.1mM PMSF, 25% glycerol.

Storage and Stability

Store product at -70°C . For optimal storage, aliquot target into smaller quantities after centrifugation and store at recommended temperature. For most favorable performance, avoid repeated handling and multiple freeze/thaw cycles.

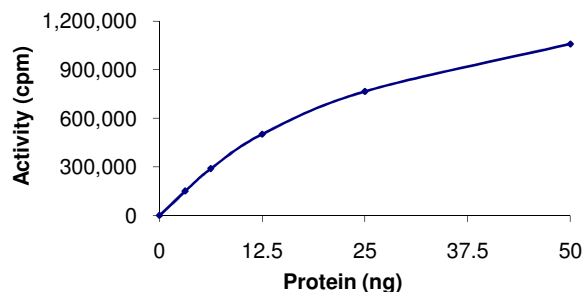
Scientific Background

The catalytic subunit C-alpha of PKA (PKA α) is a member of the Ser/Thr protein kinase family and has been assigned to chromosome region 19p13.1 (1). Null mutation in PKA α leads to early postnatal lethality in the majority of C-alpha knockout mice. Surprisingly, a small percentage of C-alpha knockout mice, although runted, survived to adulthood. In these animals, compensatory increases in C-beta levels occurred in brain whereas many tissues, including skeletal muscle, heart, and sperm, contained less than 10% of the normal PKA activity (2).

References

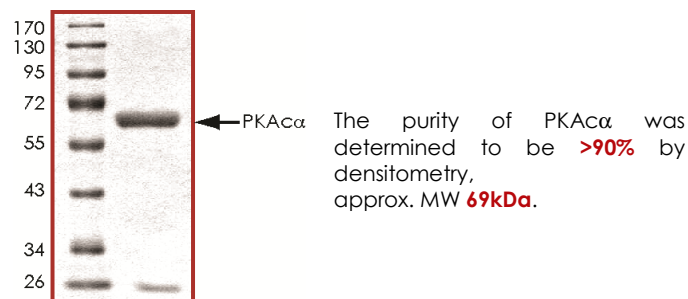
- Tasken, K. et al: The gene encoding the catalytic subunit C-alpha of cAMP-dependent protein kinase (locus PRKACA) localizes to human chromosome region 19p13.1. Genomics 36: 535-538, 1996.
- Skalhegg, BS. Et al: Mutation of the C-alpha subunit of PKA leads to growth retardation and sperm dysfunction. Molec. Endocr. 16: 630-639, 2002.

Specific Activity



The specific activity of PKA α was determined to be **2100 nmol/min/mg** as per activity assay protocol.

Purity



PKA α , Active

Full-length human recombinant protein expressed in Sf9 cells

Catalog Number	P51-10G
Specific Activity	2100 nmol/min/mg
Specific Lot Number	1121-2
Purity	>90%
Concentration	0.1 µg/µl
Stability	1yr At -70°C from date of shipment
Storage & Shipping	Store product at -70°C . For optimal storage, aliquot target into smaller quantities after centrifugation and store at recommended temperature. For most favorable performance, avoid repeated handling and multiple freeze/thaw cycles. Product shipped on dry ice.

To place your order, please contact us by phone 1-(604)-232-4600, fax 1-604-232-4601 or by email: orders@signalchem.com
www.signalchem.com

FOR IN VITRO RESEARCH PURPOSES ONLY. NOT INTENDED FOR USE IN HUMAN OR ANIMALS.

Activity Assay Protocol

Reaction Components

Active Kinase (Catalog #: P51-10G)

Active PKA α (0.1 μ g/ μ l) diluted with Kinase Dilution Buffer VII (Catalog #: K27-09) and assayed as outlined in sample activity plot. (Note: these are suggested working dilutions and it is recommended that the researcher perform a serial dilution of Active PKA α for optimal results).

Kinase Dilution Buffer VII (Catalog #: K27-09)

Kinase Assay Buffer I (Catalog #: K01-09) diluted at a 1:4 ratio (5X dilution) with 50ng/ μ l BSA and 5% glycerol solution.

Kinase Assay Buffer I (Catalog #: K01-09)

Buffer components: 25mM MOPS, pH 7.2, 12.5mM β -glycerol-phosphate, 25mM MgCl₂, 5mM EGTA, 2mM EDTA. Add 0.25mM DTT to Kinase Assay Buffer prior to use.

[³³P]-ATP Assay Cocktail

Prepare 250 μ M [³³P]-ATP Assay Cocktail in a designated radioactive working area by adding the following components: 150 μ l of 10mM ATP Stock Solution (Catalog #: A50-09), 100 μ l [³³P]-ATP (1mCi/100 μ l), 5.75ml of Kinase Assay Buffer I (Catalog #: K01-09). Store 1ml aliquots at -20°C.

10mM ATP Stock Solution (Catalog #: A50-09)

Prepare ATP stock solution by dissolving 55mg of ATP in 10ml of Kinase Assay Buffer I (Catalog #: K01-09). Store 200 μ l aliquots at -20°C.

Substrate (Catalog #: C50-58)

CREBtide synthetic peptide substrate (KRREILSRPSYR) (Catalog #: C50-58) diluted in distilled H₂O to a final concentration of 1mg/ml.

Assay Protocol

- Step 1.** Thaw [³³P]-ATP Assay Cocktail in shielded container in a designated radioactive working area.
- Step 2.** Thaw the Active PKA α , Kinase Assay Buffer, Substrate and Kinase Dilution Buffer on ice.
- Step 3.** In a pre-cooled microfuge tube, add the following reaction components bringing the initial reaction volume up to 20 μ l:
 - Component 1.** 10 μ l of diluted Active PKA α (Catalog #P51-10G)
 - Component 2.** 5 μ l of 1mg/ml stock solution of substrate (Catalog #C50-58)
 - Component 3.** 5 μ l distilled H₂O (4°C)
- Step 4.** Set up the blank control as outlined in step 3, excluding the addition of the substrate. Replace the substrate with an equal volume of distilled H₂O.
- Step 5.** Initiate the reaction by the addition of 5 μ l [³³P]-ATP Assay Cocktail bringing the final volume up to 25 μ l and incubate the mixture in a water bath at 30°C for 15 minutes.
- Step 6.** After the 15 minute incubation period, terminate the reaction by spotting 20 μ l of the reaction mixture onto individual pre-cut strips of phosphocellulose P81 paper.
- Step 7.** Air dry the pre-cut P81 strip and sequentially wash in a 1% phosphoric acid solution (dilute 10ml of phosphoric acid and make a 1L solution with distilled H₂O) with constant gentle stirring. It is recommended that the strips be washed a total of 3 intervals for approximately 10 minutes each.
- Step 8.** Count the radioactivity on the P81 paper in the presence of scintillation fluid in a scintillation counter.
- Step 9.** Determine the corrected cpm by removing the blank control value (see Step 4) for each sample and calculate the kinase specific activity as outlined below.

Calculation of [³³P]-ATP Specific Activity (SA) (cpm/pmol)

Specific activity (SA) = cpm for 5 μ l [³³P]-ATP / pmoles of ATP (in 5 μ l of a 250 μ M ATP stock solution, i.e., 1250 pmoles)

Kinase Specific Activity (SA) (pmol/min/ μ g or nmol/min/mg)

Corrected cpm from reaction / [(SA of ³³P-ATP in cpm/pmol)*(Reaction time in min)*(Enzyme amount in μ g or mg)]*[(Reaction Volume) / (Spot Volume)]

To place your order, please contact us by phone 1-(604)-232-4600, fax 1-604-232-4601 or by email: orders@signalchem.com
www.signalchem.com

FOR IN VITRO RESEARCH PURPOSES ONLY. NOT INTENDED FOR USE IN HUMAN OR ANIMALS.