

CDC25C, Active

Full-length recombinant human protein expressed in Sf9 cells

Catalog # C04-20CG

Lot # 1074-2

Product Description

Full-length recombinant human CDC25C was expressed in Sf9 insect cells using an N-terminal GST tag. The gene accession number is [BC019089](#).

Gene Aliases

CDC25

Formulation

Recombinant protein stored in 20mM MOPS, pH 7.5, 300mM NaCl, 10mM glutathione, 0.25mM DTT, 0.1mM PMSF, 25% glycerol.

Storage and Stability

Store product at -70°C. For optimal storage, aliquot target into smaller quantities after centrifugation and store at recommended temperature. For most favorable performance, avoid repeated handling and multiple freeze/thaw cycles.

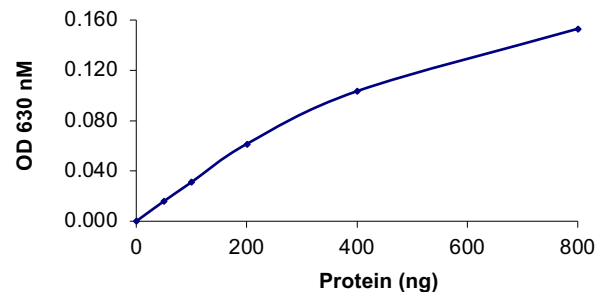
Scientific Background

CDC25C (also known as cell division cycle 25 homolog C) is a member of the CDC25 phosphatase family. CDC25C is highly conserved during evolution and it plays a key role in the regulation of cell division. CDC25C activates the partially purified p34 (cdc2)/cyclin B complex and directs the dephosphorylation of cyclin B-bound CDC2 and triggers entry into mitosis (1). CDC25C also suppresses p53-induced growth arrest. The regulation of CDC25B phosphorylation by p38 is a critical event for initiating the G2/M checkpoint after ultraviolet radiation (2).

References

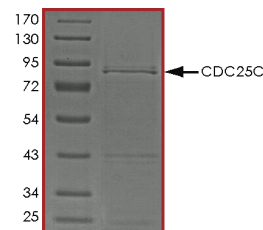
- Gould, K. L. et.al: Complementation of the mitotic activator, p80(cdc25), by a human protein-tyrosine phosphatase. *Science* 250: 1573-1576, 1990.
- Bulavin, D. V. et.al: Initiation of a G2/M checkpoint after ultraviolet radiation requires p38 kinase. *Nature* 411: 102-107, 2001.

Specific Activity



The specific activity of CDC25C was determined to be **25 nmol phosphate released /min/mg** as per activity assay protocol.

Purity



The purity of CDC25C was determined to be **>70%** by densitometry. Approx. MW **84kDa**.

CDC25C, Active

Full-length recombinant human protein expressed in Sf9 cells

Catalog #	C04-20CG
Specific Activity	25nmol/min/mg
Lot #	1074-2
Purity	>70%
Concentration	0.1µg/µl
Stability	1yr at -70°C from date of shipment
Storage & Shipping	Store product at -70°C. For optimal storage, aliquot target into smaller quantities after centrifugation and store at recommended temperature. For most favorable performance, avoid repeated handling and multiple freeze/thaw cycles. Product shipped on dry ice.

To place your order, please contact us by phone 1-(604)-232-4600, fax 1-604-232-4601 or by email: orders@signalchem.com
www.signalchem.com

FOR IN VITRO RESEARCH PURPOSES ONLY. NOT INTENDED FOR USE IN HUMAN OR ANIMALS.

Activity Assay Protocol

Reaction Components

Active Phosphatase (Catalog #: C04-20CG)

Active CDC25C (0.1µg/µl) diluted with CDC25 Dilution Buffer and assayed as outlined in sample activity plot. (Note: these are suggested working dilutions and it is recommended that the researcher perform a serial dilution of Active CDC25C for optimal results).

CDC25 Dilution Buffer

CDC25 Dilution Buffer contains 100mM TRIS-HCl, pH8.2, 40mM NaCl, 1mM dithiothreitol, 20% glycerol.

Substrate Assay Solution

OMFP (3-o-methylfluorescein phosphate) diluted in CDC25 Dilution Buffer to a final concentration of 500 µM.

Detection Solution

BIOMOL GREEN reagent phosphatase detection kit (BioMol Catalog #: AK-111).

Assay Protocol

- Step 1.** Prepare a fresh batch of CDC25 Dilution Buffer and keep on ice.
- Step 2.** Prepare phosphate standard curve following the instruction of BIOMOL GREEN reagent phosphatase detection kit. Briefly, prepare 1:1 serial dilutions of phosphate standard solutions with CDC25 Dilution Buffer in a volume of 25µl. Also, use 25µl CDC25 Dilution Buffer as a blank. The range of phosphate amount should be 0~4 nmol.
- Step 3.** Thaw the Active CDC25C on ice. Prepare serial dilutions of CDC25C using CDC25 Dilution Buffer.
- Step 4.** In a pre-cooled microfuge tube, add the following reaction components in total volume of 25µl:

Component 1. 10µl of diluted Active CDC25C (Catalog #C04-20CG)

Component 2. 10µl of Substrate Assay Solution

Component 3. 5µl CDC25 Dilution Buffer

- Step 5.** Set up the blank control as outlined in step 4, excluding the addition of the Active Phosphatase. Replace the Active Phosphatase with an equal volume of CDC25 Dilution Buffer.
- Step 6.** Start the reaction by incubating the mixture in a water bath at 37°C for 30 minutes.
- Step 7.** Add 100µl BIOMOL GREEN Reagent to each reaction including control tubes.
- Step 8.** Add 100µl BIOMOL GREEN Reagent to each phosphate standard solution including the blank (step 2).
- Step 9.** Incubate at room temperature for 30 minutes to allow development of the green color.
- Step 10.** Measure the absorbance of the reaction solution in a spectrophotometer at 630 nm.
- Step 11.** Plot the free phosphate standard curve. Determine absorbance (y) for each sample (where y = absorbance of sample – background absorbance) and calculate the corresponding nmol phosphate released (x) during the assay using the equation $y = A*x + B$ or $x = [y - B] / A$ (the A and B values are determined from the slope of the line from the standard curve).
- Step 12.** Calculate the phosphatase specific activity (SA):

Phosphatase Specific Activity (SA) (nmol/min/mg)

$$SA = \text{Corresponding phosphate released} * 1000 / [(\text{Reaction time in min}) * (\text{Enzyme amount in } \mu\text{g})]$$

To place your order, please contact us by phone 1-(604)-232-4600, fax 1-604-232-4601 or by email: orders@signalchem.com
www.signalchem.com

FOR IN VITRO RESEARCH PURPOSES ONLY. NOT INTENDED FOR USE IN HUMAN OR ANIMALS.

SAFETY DATA SHEET

Article 1 - Product Identification and Use

Product Name: CDC25C, Active

Catalog # C04-20CG

This product is sold only for research use by qualified laboratory personnel, and is not to be used as a drug, medical device, food additive, cosmetic, nor household chemical. It is not to be used in diagnostic, therapeutic, consumer, agricultural, nor pesticidal applications.

Manufacturer's Name: SignalChem Pharmaceuticals Inc.
Street Address: 110-13120 Vanier Place
City, Prov. Postal Code: Richmond, BC, V6V 2J2
Fax: 604-232-4601
EMERGENCY PHONE: 604-232-4600

Article 2 - Hazard Identification

- **WHMIS Classification:** Not WHMIS controlled.
- **GHS classification:** Skin irritation (Category 3); Eye irritation (Category 2B).
- **Hazard Pictograms:** none.
- **Signal words:** Warning.
- **Hazard statements:** Causes mild skin irritation (H316); Causes eye irritation (H320).
- **Precautionary statements:** IF IN EYES: Rinse cautiously with water for several minutes. Remove contact lenses, if present and easy to do. Continue rinsing. (P305 + P351 + P338).
- **Other hazards:** none known.

Article 3 – Composition/Information on Ingredients

Chemical Characterization: Mixtures.

Description: This product consists of the substances listed below.

Common name	Chemical name	CAS-No.	Concentration
Glycerol	Glycerol	56-81-5	≤30%
NaCl	Sodium chloride	7647-14-5	≤1.753%
MOPS	3-(N-morpholino) propanesulfonic acid	1132-61-2	0.418%
Glutathione	Glutathione	70-18-8	0.307%
Protein		No data available	≤0.02%
DTT; Dithiothreitol	(R*,R*)-1,4-Dimercaptobutane-2,3-diol	3483-12-3	0.0038%
PMSF; Phenylmethanesulfonyl fluoride	α-Toluenesulphonyl fluoride	329-98-6	0.002%

Article 4 – First-aid Measures

- **General information:** Consult a physician by providing the SDS.
- **After inhalation:** Breathe in fresh air. If cannot breath, give artificial respiration and consult a physician.
- **After skin contact:** Immediately wash with soap and plenty of water and rinse thoroughly. Consult a physician.
- **After eye contact:** Rinse opened eyes with plenty of water for at least 15 minutes. Consult a physician.
- **After swallowing:** rinse the mouth with plenty of water and consult a physician.

Article 5 - Fire-fighting Measures

- **Suitable extinguishing media:** Use water spray, extinguishing powder, carbon dioxide, or other appropriate measure that is suitable to the environment.
- **Specific hazards arising from the substance or mixture:** None known.
- **Special protective equipment and precautions for fire-fighters:** Self-contained breathing apparatus if necessary.

To place your order, please contact us by phone 1-(604)-232-4600, fax 1-604-232-4601 or by email: orders@signalchem.com
www.signalchem.com

FOR IN VITRO RESEARCH PURPOSES ONLY. NOT INTENDED FOR USE IN HUMAN OR ANIMALS.

SAFETY DATA SHEET

Article 6 – Accidental Release Measures

- **Personal precautions, protective equipment and emergency procedures:** Apply standard laboratory practices and personal protective equipment. Avoid breathing vapors, mist, or gas. Ensure adequate ventilation.
- **Environmental precautions:** Do not allow to enter drains.
- **Methods and materials for containment and cleaning up:** Absorb on sand or vermiculite and place in closed containers for disposal.

Article 7 - Handling and Storage

- **Precautions for safe handling:** Wear chemical safety goggles and compatible chemical-resistant gloves. Avoid inhalation, contact with eyes, skin or clothing.
- **Conditions for safe storage:** Store in a dry and well-ventilated place in -70 °C. Keep container upright and tightly closed.

Article 8 - Exposure Controls/Personal Protection

- **Components with limit monitoring values at workplace:**
Glycerol (CAS-No: 56-81-5)

Values	Control parameters	Regulations
TWA	10 mg/m ³ for mist	British Columbia, Canada
TWA	3 mg/m ³ for respirable mist	British Columbia, Canada
TWA	10 mg/m ³	Alberta, Canada
TWAEV	10 mg/m ³	Ontario, Canada
TWAEV	10 mg/m ³	Quebec, Canada
TWA	10 mg/m ³	USA

- **Appropriate engineering controls:**
Apply adequate ventilation including mechanical exhaust or laboratory fume hood. Follow standard laboratory practices.
- **Individual protection measures:**
Respiratory protection:
Use appropriate respirator if there is inadequate ventilation by following the government standards.
Hand protection:
Wear gloves and use proper glove removal technique to avoid skin contact. Discard gloves after use by following the applicable laboratory regulations. Wash and dry hands.
Eye/face protection:
Safety goggles with side-shields approved under appropriate government standards.
Skin/body protection:
Use appropriate clothing, footwear and any additional protection measures to protect from splashing or contamination.

Article 9 – Physical and Chemical Properties

Appearance: Colorless fluid.	Danger of explosion: Product does not present an explosion hazard.
Odour/Odour Threshold: Not determined.	Explosion limits: Lower: 0.9 Vol %; Upper: 0.0 Vol %.
pH: Not available.	Decomposition temperature: Not available.
Melting point/freezing point: Not determined.	Vapor pressure at 20 °C: 0.1 hPa
Boiling point/Boiling range: 100 °C.	Density: Not determined.
Flash point: > 100 °C.	Relative density: Not determined.
Flammability (solid, gaseous): Not determined.	Vapor density: Not determined.
Ignition temperature: 400 °C.	Evaporation rate: Not determined.
Auto-igniting: Product is not self-igniting.	Solubility in / Miscibility with Water: Fully miscible.

Article 10 - Stability and Reactivity

- **Reactivity:** Stable under recommended transport and storage conditions.
- **Chemical stability:** Stable under recommended transport and storage conditions.
- **Possible hazardous reactions:** No dangerous reactions known.
- **Conditions to avoid:** Heat and moisture.
- **Incompatible materials:** Strong acids/bases, strong oxidizing/reducing agents.
- **Hazardous decomposition products:** Carbon oxides may formed under fire conditions; no known decomposition information for other decomposition products.

To place your order, please contact us by phone 1-(604)-232-4600, fax 1-604-232-4601 or by email: orders@signalchem.com
www.signalchem.com

FOR IN VITRO RESEARCH PURPOSES ONLY. NOT INTENDED FOR USE IN HUMAN OR ANIMALS.

SAFETY DATA SHEET

Article 11 - Toxicological Information

- **Acute toxicity:** Not available.
- **LD/LC50:** Not available.
- **Skin corrosion/irritation:** Not available.
- **Serious eye damage/eye irritation:** Not available.
- **Respiratory or skin sensitization:** Not available.
- **Germ cell mutagenicity:** Not available.
- **Carcinogenicity:** No components are listed in IARC, or NTP, or OSHA, or ACGIH.
- **Reproductive toxicity:** Not available.
- **Teratogenicity:** Not available.
- **Specific target organ toxicity - single exposure/ - repeated exposure (GHS):** Not available.
- **Aspiration hazard:** Not available.
- **Potential health effects:**
 - Inhalation:** May be harmful if inhaled. May cause respiratory tract irritation.
 - Ingestion:** May be harmful if swallowed.
 - Skin:** May be harmful if absorbed through skin. May cause skin irritation.
 - Eyes:** May cause eye irritation.
- **Signs and Symptoms of Exposure:**
 - Prolonged or repeated exposure can cause: Nausea, Dizziness.
- **Synergistic effects:** Not available.

Article 12 - Ecological Information

- **Eco-toxicity:** Not applicable.
- **Biodegradability:** Not applicable.
- **Bio-accumulative potential:** Not applicable.
- **Mobility in soil:** Not applicable.
- **PBT and vPvB assessment:** Not applicable.
- **Other adverse effects:** Not applicable.

Article 13 - Disposal Considerations

- **Disposal methods:** In accordance to applicable national, regional, or local laws and regulations. For additional handling information and protection of employees please refer to Article 7 and 8.
- **Contaminated packaging:** Disposal should be made in accordance to official regulations. Use water or cleansing agents to clean the area.

Article 14 - Transport Information

- **DOT:** Not dangerous goods.
- **IMDG:** Not dangerous goods.
- **IATA:** Not dangerous goods.

Article 15 - Regulatory Information

- **WHMIS Classification:** Non-hazardous.
- **GHS label elements:** Not applicable.
- **Signal word:** Not applicable.
- **Hazard statements:** Not applicable.

Article 16 - Other Information

The above information is believed to be correct but does not purport to be all-inclusive and shall be used only as a guide. SignalChem shall not be held liable for any damage resulting from handling or from contact with the above product. See the Technical Specification, Packing Slip, Invoice, and Product Catalog for additional terms and conditions of sale.

To place your order, please contact us by phone 1-(604)-232-4600, fax 1-604-232-4601 or by email: orders@signalchem.com
www.signalchem.com

FOR IN VITRO RESEARCH PURPOSES ONLY. NOT INTENDED FOR USE IN HUMAN OR ANIMALS.