

RAS Protein

Human recombinant protein expressed in E.coli cells

Catalog # R05-30G

Lot # H331-3

Product Description

Recombinant full length human RAS was expressed in E.coli cells using an N-terminal GST tag. The gene accession number is [NM_005343](#).

Gene Aliases

K-ras; N-ras; RASH1; c-bas/has

Formulation

Recombinant protein stored in 50mM Tris-HCl, pH 7.5, 150mM NaCl, 0.25mM DTT, 0.1mM EGTA, 0.1mM EDTA, 0.1mM PMSF, 25% glycerol.

Storage and Stability

Store product at -70°C. For optimal storage, aliquot target into smaller quantities after centrifugation and store at recommended temperature. For most favorable performance, avoid repeated handling and multiple freeze/thaw cycles.

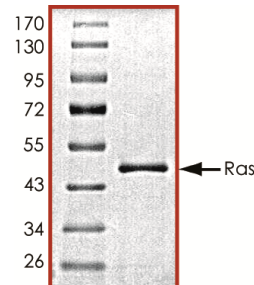
Scientific Background

The RAS gene superfamily encodes a group of closely related 21,000 dalton (p21) proteins with special affinity for guanine nucleotides (GTP). RAS and several other cellular proteins with similar biochemical properties are collectively known as G-proteins and they play key roles in a wide variety of cellular activities, including cell growth, differentiation, secretion, and protein trafficking (1). There are three forms of RAS gene in cells termed H-RAS, N-RAS, and K-RAS. RAS proteins play a direct causal role in human cancer and in other diseases. Mutant H-RAS, N-RAS, and K-RAS occur in varying frequencies in different tumor types (2). Other members of the RAS superfamily may also contribute to cancer.

References

1. Shih, T. Y., et al: Structure and function of p21 ras proteins. *Gene Amplif Anal.* 1986;4:53-72.
2. Rodriguez-Viciana, P.: Cancer targets in the Ras pathway. *Cold Spring Harb Symp Quant Biol.* 2005;70:461-7.

Purity



The purity was determined to be **>95%** by densitometry. Approx. MW **47kDa**.

RAS Protein

Human recombinant protein expressed in E.coli cells

Catalog Number **R05-30G**

Specific Lot Number **H331-3**

Purity **>95%**

Concentration **0.2 µg/µl**

Stability

Storage & Shipping

1 yr at -70°C from date of shipment
Store product at -70°C. For optimal storage, aliquot target into smaller quantities after centrifugation and store at recommended temperature. For most favorable performance, avoid repeated handling and multiple freeze/thaw cycles. Product shipped on dry ice.

To place your order, please contact us by phone 1-(604)-232-4600, fax 1-604-232-4601 or by email: orders@signalchem.com
www.signalchem.com

FOR IN VITRO RESEARCH PURPOSES ONLY. NOT INTENDED FOR USE IN HUMAN OR ANIMALS.