

Anti-STAT4

Rabbit Polyclonal Antibody

Catalog #S55-63R

Lot # H283-9

Cited Applications

- Western blot (1:1000)

Ideal working dilutions for each application should be empirically determined by the investigator.

Specificity

Recognizes the STAT4 protein

Cross Reactivity

- Western blot of human STAT4

STAT4 from other species may also be detectable

Host

Rabbit

Immunogen

Synthetic peptide corresponding to amino acids 691-695 of human STAT4

Formulation

PBS pH 7.4, 0.02% sodium azide, 50% glycerol

Stability

Store at 4°C (add 0.1% NaN₃) for several months, and at -20°C for longer periods. For optimal storage, aliquot antibody into smaller quantities after centrifugation and store at recommended temperature. For optimal performance, avoid repeated handling and multiple freeze/thaw cycles.

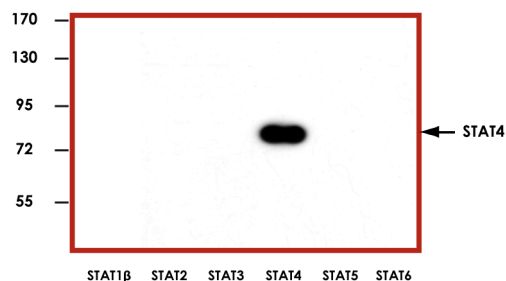
Scientific Background

STAT4 (signal transducer and activator of transcription 4) is a member of the STAT family that is phosphorylated by receptor-associated protein kinases. STATs form homo- or heterodimers and translocate to the cell nucleus where they act as transcription activators. T helper (Th) cells differentiation is regulated by STAT4 (1). STAT4 controls T1/T2 balance during the response to live influenza virus and isolated viral proteins. The differentiation of gamma interferon (IFN-γ)-producing Th1 and Tc1 cells after inoculation of live virus occurred independently of STAT4 expression. STAT4 has been shown to control pathogenesis of chronic obstructive pulmonary disease (2).

References

1. Andrea L W. et al: The biology of Stat4 and Stat6. *Oncogene*, 2000,19: 21, 2577-2584.
2. Cosio. G M.: Autoimmunity, T-cells and STAT-4 in the pathogenesis of chronic obstructive pulmonary disease. *Eur Respir J*, 2004; 24:3-5.

Sample Data



Representative western blot with Anti-STAT4 (1:1000) using 20 ng of human recombinant STAT1β, STAT2, STAT3, STAT4, STAT5, and STAT6.

Anti-STAT4

Rabbit Polyclonal Antibody

Catalog Number

S55-63R

Specific Lot Number

H283-9

Purification

Affinity chromatography

Concentration

1.0 µg/µL

Stability

1yr At -20°C from date of shipment

Storage & Shipping

Store product at -20°C. For optimal storage, aliquot antibody into smaller quantities after centrifugation and store at recommended temperature. For optimal performance, avoid repeated handling and multiple freeze/thaw cycles. Product shipped on ice packs.

To place your order, please contact us by phone 1-(604)-232-4600, fax 1-604-232-4601 or by email: orders@signalchem.com

www.signalchem.com

FOR IN VITRO RESEARCH PURPOSES ONLY. NOT INTENDED FOR USE IN HUMAN OR ANIMALS.