

## Anti-STAT1β

Rabbit Polyclonal Antibody

**Catalog #S52-63R**

Lot # H283-7

### Cited Applications

- Western blot (1:1000)

Ideal working dilutions for each application should be empirically determined by the investigator.

### Specificity

Recognizes the STAT1β protein

### Cross Reactivity

- Western blot of human STAT1β

STAT1β from other species may also be detectable

### Host

Rabbit

### Immunogen

Synthetic peptide corresponding to amino acids 699-703 of human STAT1β

### Formulation

PBS pH 7.4, 0.02% sodium azide, 50% glycerol

### Stability

Store at 4°C (add 0.1% NaN<sub>3</sub>) for several months, and at -20°C for longer periods. For optimal storage, aliquot antibody into smaller quantities after centrifugation and store at recommended temperature. For optimal performance, avoid repeated handling and multiple freeze/thaw cycles.

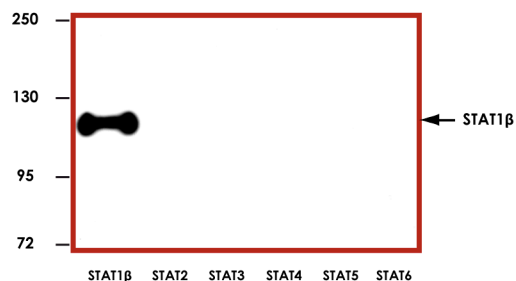
### Scientific Background

STAT1β is a member of the signal transducers and activators of transcription (STAT) family of proteins that carry out a dual function: signal transduction and activation of transcription. STAT1β transcription factor is specific for the IFN pathway and plays a central role in mediating many, if not all, IFN-dependent biological responses (1). Presence of STAT1β leads to an efficient antiviral response when cells were infected with virus suggesting that a STAT-dependent pathway is activated following virus infection by endogenously produced IFN. Virus-induced STAT protein translocation from the cytoplasmic compartment can be detected within 3 h of infection.

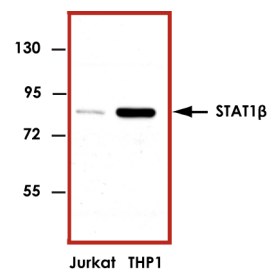
### References

1. Improtta, T. et al: Susceptibility to virus infection is determined by a Stat-mediated response to the autocrine effect of virus-induced type I interferon. Cytokine. 1997 Jun;9(6):383-93.

### Sample Data



Representative western blot with Anti-STAT1β (1:1000) using 20 ng of GST-tagged human recombinant STAT1β, STAT2, STAT3, STAT4, STAT5, and STAT6.



Representative western blot with Anti-STAT1β (1:1000) using 30 µg of Jurkat and THP1 cell lysate.

## Anti-STAT1β

Rabbit Polyclonal Antibody

Catalog Number

S52-63R

Specific Lot Number

H283-7

Purification

Affinity chromatography

Concentration

1.0 µg/µL

Stability

1 yr At -20°C from date of shipment

Storage & Shipping

Store product at -20°C. For optimal storage, aliquot antibody into smaller quantities after centrifugation and store at recommended temperature. For optimal performance, avoid repeated handling and multiple freeze/thaw cycles. Product shipped on ice packs.

To place your order, please contact us by phone 1-(604)-232-4600, fax 1-604-232-4601 or by email: [orders@signalchem.com](mailto:orders@signalchem.com)  
[www.signalchem.com](http://www.signalchem.com)

**FOR IN VITRO RESEARCH PURPOSES ONLY. NOT INTENDED FOR USE IN HUMAN OR ANIMALS.**