

Anti-PKC μ

Rabbit Polyclonal Antibody

Catalog # **P72-63R**

Lot # H270-3

Cited Applications

- Western blot (1:1000)

Ideal working dilutions for each application should be empirically determined by the investigator.

Specificity

Recognizes the PKC μ protein

Cross Reactivity

- Western blot human PKC μ

PKC μ from other species may also be detectable

Host

Rabbit

Immunogen

Synthetic peptide corresponding to amino acids 736-740 of human PKC μ

Formulation

PBS pH 7.4, 0.02% sodium azide, 50% glycerol

Stability

Store at 4°C (add 0.1% NaN₃) for several months, and at -20°C for longer periods. For optimal storage, aliquot antibody into smaller quantities after centrifugation and store at recommended temperature. For optimal performance, avoid repeated handling and multiple freeze/thaw cycles.

Scientific Background

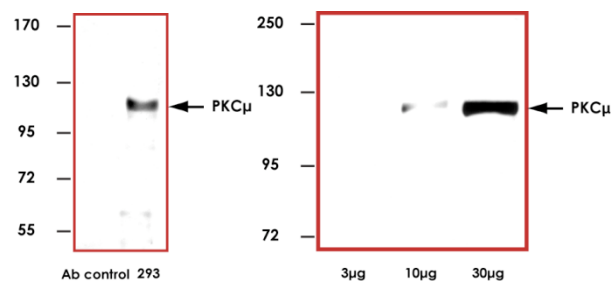
Protein kinase C mu (PKC μ) is a member of the protein kinase C (PKC) family that differs from the other PKC isoenzymes in structural and enzymatic properties. PKC μ is ubiquitous in nature with the highest expression in the thymus, lung and peripheral blood mononuclear cells (1). PKC μ forms a complex in vivo with a phosphatidylinositol 4-kinase and a phosphatidylinositol-4-phosphate 5-kinase. A region of PKC μ between the amino-terminal transmembrane domain and the pleckstrin homology domain is shown to be involved in the association with the lipid kinases (2).

References

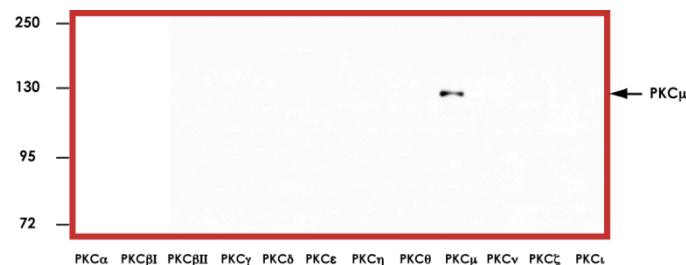
1. Rennecke, J. et al: Immunological demonstration of protein kinase C mu in murine tissues and various cell lines. Eur J Biochem. 1996 Dec 1;242(2):428-32.
2. Nishikawa, K. et al: Association of protein kinase Cmu with type II phosphatidylinositol 4-kinase and type phosphatidylinositol-4-phosphate 5-kinase. J Biol Chem. 1998 Sep 4;273(36):23126-33.

To place your order, please contact us by phone 1-(604)-232-4600, fax 1-604-232-4601 or by email: orders@signalchem.com
www.signalchem.com

Sample Data



Representative immunoprecipitation (left image) with 2 µg of Anti-PKC μ using 500 µg of HEK-293T cell lysate. Representative western blot (right image) with Anti-PKC μ (1:1000) using 3 µg, 10 µg, and 30 µg of HEK-293T cell lysate.



Representative western blot with Anti-PKC μ (1:1000) using 20 ng of GST-tagged human recombinant PKC α , PKC β I, PKC β II, PKC γ , PKC δ , PKC ϵ , PKC η , PKC θ , PKC μ , PKC ν , PKC ζ , and PKC ι .

Anti-PKC μ

Rabbit Polyclonal Antibody

Catalog Number	P72-63R
Specific Lot Number	H270-3
Purification	Affinity chromatography
Concentration	1.0 µg/µL
Stability	1yr At -20°C from date of shipment
Storage & Shipping	Store product at -20°C. For optimal storage, aliquot antibody into smaller quantities after centrifugation and store at recommended temperature. For optimal performance, avoid repeated handling and multiple freeze/thaw cycles. Product shipped on ice packs.