

Catalogue #	Aliquot Size
S08-10G -05	5 µg
S08-10G -10	10 µg
S08-10G -20	20 µg

## SGK3, Active

Full-length recombinant protein expressed in Sf9 cells

**Catalog # S08-10G**

Lot # H236-2

### Product Description

Recombinant full-length human SGK3 was expressed by baculovirus in Sf9 insect cells using an N-terminal GST tag. The gene accession number is [NM\\_013257](#).

### Gene Aliases

CISK, SGKL

### Formulation

Recombinant protein stored in 50mM Tris-HCl, pH 7.5, 150mM NaCl, 0.25mM DTT, 0.1mM EGTA, 0.1mM EDTA, 0.1mM PMSF, 25% glycerol.

### Storage and Stability

Store product at  $-70^{\circ}\text{C}$ . For optimal storage, aliquot target into smaller quantities after centrifugation and store at recommended temperature. For most favorable performance, avoid repeated handling and multiple freeze/thaw cycles.

### Scientific Background

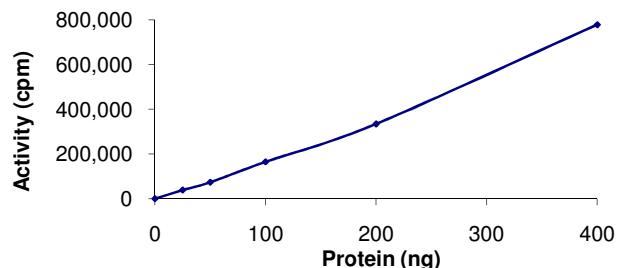
SGK3 is a member of the SGK family and encodes a phosphoprotein with a PX (phox homology) domain. PKD1 can phosphorylate and activate SGK3 in vitro (1). A 10-fold increase in PKD1 increases the phosphorylation status of SGK3. When expressed in human embryonic kidney cells, IGF1 and peroxide significantly activate SGK3, and the activation could be reduced by preincubation with inhibitors of PI3 kinase. A yeast 2-hybrid screen found direct interaction between human SGK3 and GSK3 $\beta$ . SGK3 phosphorylates several target proteins and has a role in neutral amino acid transport and activation of potassium and chloride channels (2).

### References

1. Kobayashi, T. et al: Characterization of the structure and regulation of two novel isoforms of serum- and glucocorticoid-induced protein kinase. *Biochem. J.* 344: 189-197, 1999.
2. Gamper, N. et al: K<sup>+</sup> channel activation by all three isoforms of serum- and glucocorticoid-dependent protein kinase SGK. *Eur. J. Physiol.* 445: 60-66, 2002.

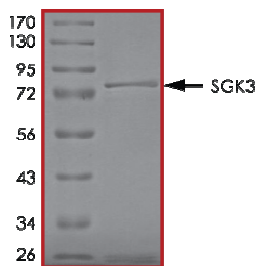
To place your order, please contact us by phone 1-(604)-232-4600, fax 1-604-232-4601 or by email: [orders@signalchem.com](mailto:orders@signalchem.com)  
[www.signalchem.com](http://www.signalchem.com)

### Specific Activity



The specific activity of SGK3 was determined to be **90 nmol/min/mg** as per activity assay protocol.

### Purity



The purity of SGK3 was determined to be **>85%** by densitometry, approx. MW **82kDa**.

## SGK3, Active

Full-length recombinant protein expressed in Sf9 cells

Catalog Number	S08-10G
Specific Activity	90 nmol/min/mg
Specific Lot Number	H236-2
Purity	>85%
Concentration	0.1 µg/µl
Stability	1yr at $-70^{\circ}\text{C}$ from date of shipment
Storage & Shipping	Store product at $-70^{\circ}\text{C}$ . For optimal storage, aliquot target into smaller quantities after centrifugation and store at recommended temperature. For most favorable performance, avoid repeated handling and multiple freeze/thaw cycles. Product shipped on dry ice.

# Activity Assay Protocol

## Reaction Components

### Active Kinase (Catalog #: S08-10G)

Active SGK3 (0.1µg/µl) diluted with Kinase Dilution Buffer VII (Catalog #: K27-09) and assayed as outlined in sample activity plot. (Note: these are suggested working dilutions and it is recommended that the researcher perform a serial dilution of Active SGK3 for optimal results).

### Kinase Dilution Buffer VII (Catalog #: K27-09)

Kinase Assay Buffer I (Catalog #: K01-09) diluted at a 1:4 ratio (5X dilution) with 50ng/µl BSA and 5% glycerol solution.

### Kinase Assay Buffer I (Catalog #: K01-09)

Buffer components: 25mM MOPS, pH 7.2, 12.5mM β-glycerol-phosphate, 25mM MgCl<sub>2</sub>, 5mM EGTA, 2mM EDTA. Add 0.25mM DTT to Kinase Assay Buffer prior to use.

### [<sup>33</sup>P]-ATP Assay Cocktail

Prepare 250µM [<sup>33</sup>P]-ATP Assay Cocktail in a designated radioactive working area by adding the following components: 150µl of 10mM ATP Stock Solution (Catalog #: A50-09), 100µl [<sup>33</sup>P]-ATP (1mCi/100µl), 5.75ml of Kinase Assay Buffer I (Catalog #: K01-09). Store 1ml aliquots at -20°C.

### 10mM ATP Stock Solution (Catalog #: A50-09)

Prepare ATP stock solution by dissolving 55mg of ATP in 10ml of Kinase Assay Buffer I (Catalog #: K01-09). Store 200µl aliquots at -20°C.

### Substrate (Catalog #: A05-58)

Akt (PKB) peptide substrate (CKRPRAASFAE) diluted in distilled H<sub>2</sub>O to a final concentration of 1mg/ml.

## Assay Protocol

- Step 1.** Thaw [<sup>33</sup>P]-ATP Assay Cocktail in shielded container in a designated radioactive working area.
- Step 2.** Thaw the Active SGK3, Kinase Assay Buffer, Substrate and Kinase Dilution Buffer on ice.
- Step 3.** In a pre-cooled microfuge tube, add the following reaction components bringing the initial reaction volume up to 20µl:
  - Component 1.** 10µl of diluted Active SGK3 (Catalog #S08-10G)
  - Component 2.** 5µl of 1mg/ml stock solution of substrate (Catalog #A05-58)
  - Component 3.** 5µl distilled H<sub>2</sub>O (4°C)
- Step 4.** Set up the blank control as outlined in step 3, excluding the addition of the substrate. Replace the substrate with an equal volume of distilled H<sub>2</sub>O.
- Step 5.** Initiate the reaction by the addition of 5 µl [<sup>33</sup>P]-ATP Assay Cocktail bringing the final volume up to 25µl and incubate the mixture in a water bath at 30°C for 15 minutes.
- Step 6.** After the 15 minute incubation period, terminate the reaction by spotting 20 µl of the reaction mixture onto individual pre-cut strips of phosphocellulose P81 paper.
- Step 7.** Air dry the pre-cut P81 strip and sequentially wash in a 1% phosphoric acid solution (dilute 10ml of phosphoric acid and make a 1L solution with distilled H<sub>2</sub>O) with constant gentle stirring. It is recommended that the strips be washed a total of 3 intervals for approximately 10 minutes each.
- Step 8.** Count the radioactivity on the P81 paper in the presence of scintillation fluid in a scintillation counter.
- Step 9.** Determine the corrected cpm by removing the blank control value (see Step 4) for each sample and calculate the kinase specific activity as outlined below.

### Calculation of [<sup>33</sup>P]-ATP Specific Activity (SA) (cpm/pmol)

Specific activity (SA) = cpm for 5 µl [<sup>33</sup>P]-ATP / pmoles of ATP (in 5 µl of a 250 µM ATP stock solution, i.e., 1250 pmoles)

### Kinase Specific Activity (SA) (pmol/min/µg or nmol/min/mg)

Corrected cpm from reaction / [(SA of <sup>33</sup>P-ATP in cpm/pmol)\*(Reaction time in min)\*(Enzyme amount in µg or mg)]\*[(Reaction Volume) / (Spot Volume)]

To place your order, please contact us by phone 1-(604)-232-4600, fax 1-604-232-4601 or by email: [orders@signalchem.com](mailto:orders@signalchem.com)  
[www.signalchem.com](http://www.signalchem.com)

**FOR IN VITRO RESEARCH PURPOSES ONLY. NOT INTENDED FOR USE IN HUMAN OR ANIMALS.**  
THE PRODUCT IS PROTECTED BY THE FOLLOWING PATENT / APPLICATION: US 7,083,511