

## CRYAA Protein

Full length recombinant protein expressed in E.coli cells

**Catalog # C256-30H**

Lot # F748-4

### Product Description

Recombinant full length human CRYAA was expressed in E. coli cells using an N-terminal His tag. The gene accession number is [NM\\_000394](#).

### Gene Aliases

CRYA1; HSPB4

### Formulation

Recombinant protein stored in 50mM sodium phosphate, pH 7.0, 300mM NaCl, 150mM imidazole, 0.1mM PMSF, 0.25mM DTT, 25% glycerol.

### Storage and Stability

Store product at -70°C. For optimal storage, aliquot target into smaller quantities after centrifugation and store at recommended temperature. For most favorable performance, avoid repeated handling and multiple freeze/thaw cycles.

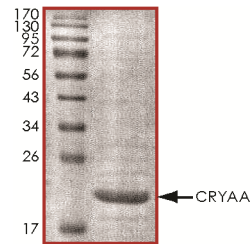
### Scientific Background

CRYAA or crystallin alpha A is the major protein components of the vertebrate eye lens which is composed of 2 primary gene products--alpha-A and alpha-B. CRYAA can be induced by heat shock and are members of the small heat shock protein (sHSP also known as the HSP20) family (1). CRYAA plays an important role in the normal embryologic development of the anterior segment of the eye. In the Elo mouse, a 1-bp deletion in the gamma-E-crystallin gene causes autosomal dominant cataract and microphthalmia (2).

### References

1. Moormann, R. J. et.al: Extensive intragenic sequence homology in two distinct rat lens gamma-crystallin cDNAs suggests duplications of a primordial gene. Proc. Nat. Acad. Sci. 79: 6876-6880, 1982.
2. Cartier, M. et.al: A frameshift mutation in the gamma-E-crystallin gene of the Elo mouse. Nature Genet. 2: 42-45, 1992. Note: Erratum: Nature Genet. 2: 343 only, 1992.

### Purity



The purity of CRYAA was determined to be **>95%** by densitometry. Approx. MW **21 kDa**.

## CRYAA Protein

Full length recombinant protein expressed in E. coli cells

Catalog Number	C256-30H
Specific Lot Number	F748-4
Purity	>95%
Concentration	0.2µg/µl
Stability	1yr At -70°C from date of shipment
Storage & Shipping	Store product at -70°C. For optimal storage, aliquot target into smaller quantities after centrifugation and store at recommended temperature. For most favorable performance, avoid repeated handling and multiple freeze/thaw cycles. Product shipped on dry ice.

To place your order, please contact us by phone 1-(604)-232-4600, fax 1-604-232-4601 or by email: [orders@signalchem.com](mailto:orders@signalchem.com)  
[www.signalchem.com](http://www.signalchem.com)

**FOR IN VITRO RESEARCH PURPOSES ONLY. NOT INTENDED FOR USE IN HUMAN OR ANIMALS.**