

Alpha-synuclein Protein

Full length recombinant protein expressed in E.coli cells

Catalog # S22-30H

Lot # F687-1

Product Description

Recombinant full length human Alpha-synuclein was expressed in E. coli cells using an N-terminal His tag. The gene accession number is [NM_000345](#).

Gene Aliases

NACP; PARK1; PARK4; PD1; SNCA

Formulation

Recombinant protein stored in 50mM sodium phosphate, pH 7.0, 300mM NaCl, 150mM imidazole, 0.1mM PMSF, 0.25mM DTT, 25% glycerol.

Storage and Stability

Store product at -70°C . For optimal storage, aliquot target into smaller quantities after centrifugation and store at recommended temperature. For most favorable performance, avoid repeated handling and multiple freeze/thaw cycles.

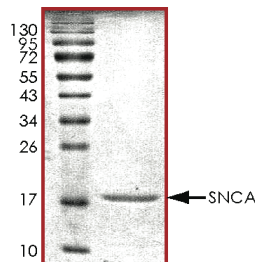
Scientific Background

Alpha-synuclein is a member of the synuclein family which also includes beta- and gamma-synuclein. These proteins are abundantly expressed in the brain and alpha- and beta-synuclein selectively inhibit phospholipase D2 which is a highly conserved protein that is also abundant in neurons, especially presynaptic terminals (1). Alpha-synuclein gene is not a major risk factor in familial Parkinson disease (2). Alpha-synuclein may serve to integrate pre-synaptic signaling and membrane trafficking and Alpha-synuclein peptides are a major component of amyloid plaques in the brains of patients with Alzheimer's disease.

References

1. Giasson, B. I. et.al: Oxidative damage linked to neurodegeneration by selective alpha-synuclein nitration in synucleinopathy lesions. *Science* 290: 985-989, 2000.
2. Markopoulou, K. et.al: Greek-American kindred with autosomal dominant, levodopa-responsive Parkinsonism and anticipation. *Ann. Neurol.* 38: 373-378, 1995.

Purity



The purity of Alpha-synuclein was determined to be **>95%** by densitometry. Approx. MW **18kDa**.

Alpha-synuclein Protein

Full length recombinant protein expressed in E. coli cells

| | |
|---------------------|--|
| Catalog Number | S22-30H |
| Specific Lot Number | F687-1 |
| Purity | >95% |
| Concentration | 0.2µg/µl |
| Stability | 1yr At -70°C from date of shipment |
| Storage & Shipping | Store product at -70°C . For optimal storage, aliquot target into smaller quantities after centrifugation and store at recommended temperature. For most favorable performance, avoid repeated handling and multiple freeze/thaw cycles. Product shipped on dry ice. |

To place your order, please contact us by phone 1-(604)-232-4600, fax 1-604-232-4601 or by email: orders@signalchem.com
www.signalchem.com

FOR IN VITRO RESEARCH PURPOSES ONLY. NOT INTENDED FOR USE IN HUMAN OR ANIMALS.