

## INCENP Protein

Recombinant human protein expressed in Sf9 cells

**Catalog # I30-31H**

Lot # F564-1

### Product Description

Recombinant human INCENP (783-end) was expressed by baculovirus in Sf9 insect cells using an N-terminal His tag. The gene accession number is [NM\\_001040694](#). This product can be used for Aurora B and Aurora C activation *in vitro*.

### Gene Aliases

FLJ31633, MGC111393

### Formulation

Recombinant protein stored in 50mM sodium phosphate, pH 7.0, 300mM NaCl, 150mM imidazole, 0.1mM PMSF, 0.25mM DTT, 25% glycerol.

### Storage and Stability

Store product at  $-70^{\circ}\text{C}$ . For optimal storage, aliquot target into smaller quantities after centrifugation and store at recommended temperature. For most favorable performance, avoid repeated handling and multiple freeze/thaw cycles.

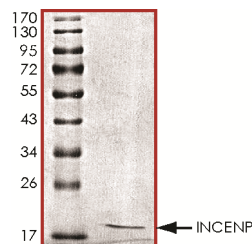
### Scientific Background

INCENP or inner centromere protein antigens 135/155kDa is a constitutively binding centromere proteins and 'passenger,' or transiently interacting, proteins. The overexpression of a truncation mutant of chicken INCENP and a chimeric CENPB:INCENP protein in mammalian cell culture disrupted both prometaphase chromosome alignment and completion of cytokinesis (1). INCENP forms a complex with the evolutionarily conserved family of Aurora B kinases which helps coordinate chromosome segregation, spindle behavior, and cytokinesis during mitosis (2).

### References

1. Mackay, A. M. et.al: A dominant mutant of inner centromere protein (INCENP), a chromosomal protein, disrupts prometaphase congression and cytokinesis. *J. Cell Biol.* 140: 991-1002, 1998.
2. Pereira, G. et.al: Separase regulates INCENP-Aurora B anaphase spindle function through Cdc14. *Science* 302: 2120-2124, 2003.

### Purity



The purity of INCENP was determined to be **>90%** by densitometry. Approx. MW **19kDa**.

## INCENP Protein

Recombinant human protein expressed in Sf9 cells

Catalog Number	I30-31H
Specific Lot Number	F564-1
Purity	>90%
Concentration	0.1µg/µl
Stability	1yr At $-70^{\circ}\text{C}$ from date of shipment
Storage & Shipping	Store product at $-70^{\circ}\text{C}$ . For optimal storage, aliquot target into smaller quantities after centrifugation and store at recommended temperature. For most favorable performance, avoid repeated handling and multiple freeze/thaw cycles. Product shipped on dry ice.

To place your order, please contact us by phone 1-(604)-232-4600, fax 1-604-232-4601 or by email: [orders@signalchem.com](mailto:orders@signalchem.com)  
[www.signalchem.com](http://www.signalchem.com)

**FOR IN VITRO RESEARCH PURPOSES ONLY. NOT INTENDED FOR USE IN HUMAN OR ANIMALS.**