

Gamma-synuclein Protein

Full length recombinant protein expressed in E.coli cells

Catalog # S22-30CH

Lot # F471-2

Product Description

Recombinant full length human Gamma-synuclein was expressed in E. coli cells using an N-terminal His tag. The gene accession number is [NM_003087](#).

Gene Aliases

BCSG1, PERSYN, PRSN, SR, SNCG

Formulation

Recombinant protein stored in 50mM sodium phosphate, pH 7.0, 300mM NaCl, 150mM imidazole, 0.1mM PMSF, 0.25mM DTT, 25% glycerol.

Storage and Stability

Store product at -70°C . For optimal storage, aliquot target into smaller quantities after centrifugation and store at recommended temperature. For most favorable performance, avoid repeated handling and multiple freeze/thaw cycles.

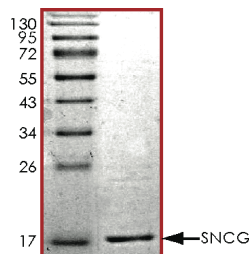
Scientific Background

Gamma-synuclein or synuclein, gamma (breast cancer-specific protein 1) is a member of the synuclein family of proteins which are believed to be involved in the pathogenesis of neurodegenerative diseases. Gamma-synuclein gene may also be overexpressed in ovarian cancers (1). The overexpression of Gamma-synuclein may indicate breast cancer malignant progression from benign or in situ carcinoma. Gamma-synuclein may also play a role in motor neurons dysfunction and cell death (2). Synuclein proteins play an important role in regulating neurotransmitter release from specific populations of midbrain dopamine neurons through mechanisms that differ from those reported in other neurons.

References

1. Ji, H. et.al: Identification of a breast cancer-specific gene, BCSG1, by direct differential cDNA sequencing. *Cancer Res.* 57: 759-764, 1997.
2. Lavedan, C. et.al: Absence of mutation in the beta- and gamma-synuclein genes in familial autosomal dominant Parkinson's disease. *DNA Research* 5: 401-402, 1998.

Purity



The purity of Gamma-synuclein was determined to be **>95%** by densitometry.
Approx. MW **17.5kDa**.

Gamma-synuclein Protein

Full length recombinant protein expressed in E. coli cells

Catalog Number	S22-30CH
Specific Lot Number	F471-2
Purity	>95%
Concentration	0.2µg/µl
Stability	1yr At -70°C from date of shipment
Storage & Shipping	Store product at -70°C . For optimal storage, aliquot target into smaller quantities after centrifugation and store at recommended temperature. For most favorable performance, avoid repeated handling and multiple freeze/thaw cycles. Product shipped on dry ice.

To place your order, please contact us by phone 1-(604)-232-4600, fax 1-604-232-4601 or by email: orders@signalchem.com
www.signalchem.com

FOR IN VITRO RESEARCH PURPOSES ONLY. NOT INTENDED FOR USE IN HUMAN OR ANIMALS.