

## CyclinD1 Protein

Full-length recombinant protein expressed in E. coli cells

**Catalog # C81-30G**

Lot # F409-5

### Product Description

Recombinant full-length human CyclinD1 was expressed in E. coli cells using an N-terminal GST tag. The gene accession number is [NM\\_053056](#).

### Gene Aliases

BCL1, PRAD1, U21B31, D11S287E

### Formulation

Recombinant protein stored in 50mM Tris-HCl, pH 7.5, 150mM NaCl, 10mM glutathione, 0.1mM EDTA, 0.25mM DTT, 0.1mM PMSF, 25% glycerol.

### Storage and Stability

Store product at -70°C. For optimal storage, aliquot target into smaller quantities after centrifugation and store at recommended temperature. For most favorable performance, avoid repeated handling and multiple freeze/thaw cycles.

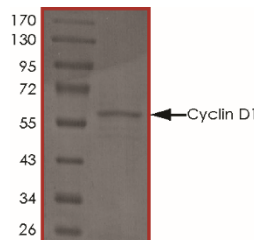
### Scientific Background

CyclinD1 is a member of the cyclin family of proteins that are important regulators cyclin-dependent protein kinases (CDKs) (1). CyclinD1 forms a complex and functions as a regulatory subunit of CDK4 or CDK6 which are important during cell cycle G1/S transition. CyclinD1 has been shown to interact with the tumor suppressor protein Rb and the expression of CyclinD1 is positively regulated by Rb. Mutations, amplification and overexpression of CyclinD1 have been frequently observed in a variety of tumors and suggesting a role of this protein in tumorigenesis (2).

### References

1. Fu, M. et al: Minireview: Cyclin D1: normal and abnormal functions. *Endocrinology* 145: 5439-5447, 2004.
2. Lamb, J. Et al: A mechanism of cyclin D1 action encoded in the patterns of gene expression in human cancer. *Cell* 114: 323-334, 2003.

### Purity



The purity of CyclinD1 was determined to be **>90%** by densitometry. Approx. MW **61kDa**.

## CyclinD1 Protein

Full-length recombinant protein expressed in E. coli cells

Catalog #	C81-30G
Lot #	F409-5
Purity	>90%
Concentration	0.2 µg/µl
Stability	1yr at -70°C from date of shipment
Storage & Shipping	Store product at -70°C. For optimal storage, aliquot target into smaller quantities after centrifugation and store at recommended temperature. For most favorable performance, avoid repeated handling and multiple freeze/thaw cycles. Product shipped on dry ice.

To place your order, please contact us by phone 1-(604)-232-4600, fax 1-604-232-4601 or by email: [orders@signalchem.com](mailto:orders@signalchem.com)  
[www.signalchem.com](http://www.signalchem.com)

**FOR IN VITRO RESEARCH PURPOSES ONLY. NOT INTENDED FOR USE IN HUMAN OR ANIMALS.**