



Catalog # Aliquot Size

W03-11G -05 5 µg

W03-11G -10 10 µg

## WNK2, Active

Recombinant human protein expressed in Sf9 cells

Catalog # W03-11G

Lot # E4462-1

### Product Description

Recombinant human WNK2 (1-489) was expressed by baculovirus in Sf9 insect cells using an N-terminal GST tag. The gene accession number is [NM\\_006648](#).

### Alternative Name(s)

KIAA1760; NY-CO-43; P/OKcl.13; PRKWNK2; SDCCAG43

### Formulation

Recombinant protein stored in 50mM Tris-HCl, pH 7.5, 150mM NaCl, 10mM glutathione, 0.1mM EDTA, 0.25mM DTT, 0.1mM PMSF, 25% glycerol.

### Storage and Stability

Store product at -70°C. For optimal storage, aliquot target into smaller quantities after centrifugation and store at recommended temperature. For most favorable performance, avoid repeated handling and multiple freeze/thaw cycles.

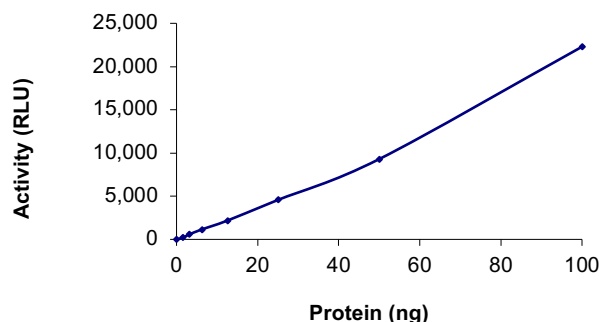
### Scientific Background

WNK2 is a serine/threonine kinase of the WNK (with no lysine (K)) protein kinase subfamily that also include WNK1, 3 and 4. The WNK kinases feature a cysteine residue in place of a lysine residue conserved in subdomain II of most kinases. WNK2 is predominantly expressed in brain, heart muscle, small intestine, and colon. As a tumor suppressor, WNK2 is involved in the modulation of growth factor-induced cancer cell proliferation through the MEK1/ERK1/2 pathway. WNK2 expression was found down-regulated epigenetically by promoter methylation in human gliomas.

### References

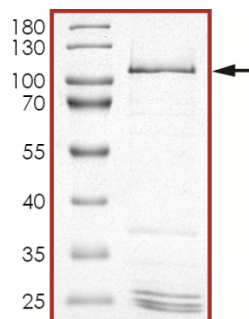
1. Verissimo F, Jordan P. WNK kinases, a novel protein kinase subfamily in multi-cellular organisms. *Oncogene*. 2001 Sep 6;20(39):5562-9.
2. Moniz S, et al. Protein kinase WNK2 inhibits cell proliferation by negatively modulating the activation of MEK1/ERK1/2. *Oncogene*. 2007 Sep 6;26(41):6071-81.
3. Moniz S, et al. Loss of WNK2 expression by promoter gene methylation occurs in adult gliomas and triggers Rac1-mediated tumour cell invasiveness. *Hum Mol Genet*. 2013;22:84-95.

### Specific Activity



The specific activity of WNK2 was determined to be **0.6 nmol/min/mg** as per activity assay protocol and was equivalent to **2.3 nmol/min/mg** as per radiometric assay.

### Purity



The purity of WNK2 was determined to be **>90%** by densitometry.  
Observed MW **~105kDa**.  
Calculated MW **~82 kDa**.

## WNK2, Active

Recombinant human protein expressed in Sf9 cells

Catalog #

W03-11G

Specific Activity

0.6 nmol/min/mg

Lot #

E4462-1

Purity

>90%

Concentration

0.05 µg/µl

Stability

1yr at -70°C from date of shipment

Storage & Shipping

Store product at -70°C. For optimal storage, aliquot target into smaller quantities after centrifugation and store at recommended temperature. For most favorable performance, avoid repeated handling and multiple freeze/thaw cycles. Product shipped on dry ice.

To place your order, please contact us by phone 1-866-9KINASE (54-6273), 1-(604)-232-4600, fax 1-604-232-4601 or by email: [orders@signalchem.com](mailto:orders@signalchem.com) - [www.signalchem.com](http://www.signalchem.com)

**FOR IN VITRO RESEARCH PURPOSES ONLY. NOT INTENDED FOR USE IN HUMAN OR ANIMALS.**

# Activity Assay Protocol

## Reaction Components

### Active Kinase (Catalog #: W03-11G)

Active WNK2 (0.1 µg/µl) diluted with Kinase Dilution Buffer IX (Catalog #: K29-09) and assayed as outlined in sample activity plot. (Note: these are suggested working dilutions and it is recommended that the researcher perform a serial dilution of Active WNK2 for optimal results).

### Kinase Assay Buffer III (5x) (Catalog #: K03-09)

Buffer components: 200mM Tris-HCl, pH 7.4, 100mM MgCl<sub>2</sub> and 0.5mg/ml BSA. Add fresh DTT prior to use to a final concentration of 250µM.

### Kinase Dilution Buffer IX (1x) (Catalog #: K29-09)

Kinase Assay Buffer III (Catalog #: K03-09) diluted at a 1:4 ratio (5X dilution) with cold, distilled H<sub>2</sub>O. Add fresh DTT prior to use to a final concentration of 50µM.

### ADP-Glo™ Kinase Assay Kit (Promega, Cat # V9101)

ATP solution, 10mM  
ADP solution, 10mM  
ADP-Glo™ Reagent  
Kinase Detection Reagent

### Substrate (Catalog #: C01-58)

PKA Substrate (CGRTGRRNSI-amide) was diluted in distilled H<sub>2</sub>O to a final concentration of 1mg/ml.

## Assay Protocol

The WNK2 assay is performed using the ADP-Glo™ Kinase Assay kit (Promega; Cat# V9101) which quantifies the amount of ADP produced by the WNK2 reaction. The ADP-Glo™ Reagent is added to terminate the kinase reaction and to deplete the remaining ATP, and then the Kinase Detection Reagent is added to convert ADP to ATP and to measure the newly synthesized ATP using luciferase/luciferin reaction.

- Step 1.** Thaw the Active WNK2, Kinase Assay Buffer III (5x), and Substrate on ice. Prepare a 15µL enzyme dilution using Kinase Dilution Buffer IX (1x), at the desired concentration, in a pre-chilled 96-well plate.
- Step 2.** Prepare a substrate/ATP mixture as follows (25µM ATP example):

| Component                    | Amount (µL) | Component           | Amount (µL) |
|------------------------------|-------------|---------------------|-------------|
| 10mM ATP Solution            | 1           | Substrate at 1mg/mL | 80          |
| Kinase Assay Buffer III (5x) | 79          |                     |             |

- Step 3.** Transfer the following reaction components prepared in Steps 1 and 2 to a 384-well opaque plate, bringing the reaction volume up to 5µL:

|                     |   |
|---------------------|---|
| <b>Component 1.</b> | 3µl of diluted Active WNK2 (Catalog #W03-11G)   |
| <b>Component 2.</b> | 2µl of Substrate/ATP mix as prepared in the table above. This initiates the reaction. |

- Step 4.** Set up the blank control as outlined in step 2, excluding the addition of the kinase. Replace the kinase with an equal volume of Kinase Dilution Buffer IX (1x).
- Step 5.** Incubate at ambient temperature for 40 minutes.
- Step 6.** After the 40-minute incubation period, terminate the reaction and deplete the remaining ATP by adding 5µl of ADP-Glo™ Reagent. Spin down and shake the 384-well plate. Then incubate the reaction mixture for another 40 minutes at ambient temperature.
- Step 7.** Then add 10µl of the Kinase Detection Reagent to the 384-well plate and incubate the reaction mixture for another 30 minutes at ambient temperature.
- Step 8.** Read the 384-well reaction plate using the Luminescence Module Protocol on a GloMax®-Multi Microplate Multimode Reader (Promega; Cat# E7061).
- Step 9.** Determine the corrected activity (RLU) by removing the blank control value (see Step 4) for each sample and calculate the kinase specific activity as outlined below.

### Calculation of Specific Activity of ADP (RLU/pmol)

From ATP-ADP conversion curve, determine RLU/pmol of ADP

### Kinase Specific Activity (SA) (pmol/min/µg or nmol/min/mg)

Corrected RLU from reaction / [(SA of ADP in RLU/pmol)\*(Reaction time in min)\*(Enzyme amount in µg or mg)]

To place your order, please contact us by phone 1-866-9KINASE (54-6273), 1-(604)-232-4600, fax 1-604-232-4601 or by email: [orders@signalchem.com](mailto:orders@signalchem.com) - [www.signalchem.com](http://www.signalchem.com)

**FOR IN VITRO RESEARCH PURPOSES ONLY. NOT INTENDED FOR USE IN HUMAN OR ANIMALS.**

# SAFETY DATA SHEET

## Article 1 – Product Identification

**Product Name: WNK2, Active****Catalog # W03-11G**

*This product is sold only for research use by qualified laboratory personnel, and is not to be used as a drug, medical device, food additive, cosmetic, nor household chemical. It is not to be used in diagnostic, therapeutic, consumer, agricultural, nor pesticidal applications.*

Manufacturer's Name: SignalChem Biotech Inc.  
Street Address: 110-13120 Vanier Place  
City, Prov. Postal Code: Richmond, BC, V6V 2J2  
Fax: 604-232-4601  
EMERGENCY PHONE: 604-232-4600

## Article 2 - Hazard Identification

- **WHMIS Classification:** Not WHMIS controlled.
- **GHS classification:** Skin irritation (Category 3); Eye irritation (Category 2B).
- **Hazard Pictograms:** none.
- **Signal words:** Warning.
- **Hazard statements:** Causes mild skin irritation (H316); Causes eye irritation (H320).
- **Precautionary statements:** IF IN EYES: Rinse cautiously with water for several minutes. Remove contact lenses, if present and easy to do. Continue rinsing. (P305 + P351 + P338).
- **Other hazards:** none known.

## Article 3 – Composition/Information on Ingredients

**Chemical Characterization:** Mixtures.

**Description:** This product consists of the substances listed below.

| Common name   | Chemical name   | CAS-No.           | Concentration |
|---|---|-------------------|---------------|
| Glycerol  | Glycerol  | 56-81-5           | ≤25%          |
| NaCl  | Sodium chloride   | 7647-14-5         | ≤1.753%       |
| Tris-HCl; Tris (hydroxymethyl) aminomethane hydrochloride | 2 - Amino - 2 - (hydroxymethyl) propane - 1, 3 - diol hydrochloride | 1185-53-1         | <0.8%         |
| Glutathione   | Glutathione   | 70-18-8           | 0.307%        |
| Protein   |   | No data available | ≤0.02%        |
| DTT; Dithiothreitol                                       | (R*,R*)-1,4-Dimercaptobutane-2,3-diol                               | 3483-12-3         | 0.0038%       |
| EDTA  | Ethylenediaminetetraacetic acid                                     | 6381-92-6         | 0.0037%       |
| PMSF; Phenylmethanesulfonyl fluoride                      | α-Toluenesulphonyl fluoride   | 329-98-6          | 0.002%        |

## Article 4 – First-aid Measures

- **General information:** Consult a physician by providing the SDS.
- **After inhalation:** Breathe in fresh air. If cannot breathe, give artificial respiration and consult a physician.
- **After skin contact:** Immediately wash with soap and plenty of water and rinse thoroughly. Consult a physician.
- **After eye contact:** Rinse opened eyes with plenty of water for at least 15 minutes. Consult a physician.
- **After swallowing:** rinse the mouth with plenty of water and consult a physician.

## Article 5 - Fire-fighting Measures

- **Suitable extinguishing media:** Use water spray, extinguishing powder, carbon dioxide, or other appropriate measure that is suitable to the environment.
- **Specific hazards arising from the substance or mixture:** None known.
- **Special protective equipment and precautions for fire-fighters:** Self-contained breathing apparatus if necessary.

To place your order, please contact us by phone 1-866-9KINASE (54-6273), 1-(604)-232-4600, fax 1-604-232-4601 or by email: [orders@signalchem.com](mailto:orders@signalchem.com) - [www.signalchem.com](http://www.signalchem.com)

**FOR IN VITRO RESEARCH PURPOSES ONLY. NOT INTENDED FOR USE IN HUMAN OR ANIMALS.**

# SAFETY DATA SHEET

## Article 6 – Accidental Release Measures

- **Personal precautions, protective equipment and emergency procedures:** Apply standard laboratory practices and personal protective equipment. Avoid breathing vapors, mist, or gas. Ensure adequate ventilation.
- **Environmental precautions:** Do not allow to enter drains.
- **Methods and materials for containment and cleaning up:** Absorb on sand or vermiculite and place in closed containers for disposal.

## Article 7 - Handling and Storage

- **Precautions for safe handling:** Wear chemical safety goggles and compatible chemical-resistant gloves. Avoid inhalation, contact with eyes, skin or clothing.
- **Conditions for safe storage:** Store in a dry and well-ventilated place in -70 °C. Keep container upright and tightly closed.

## Article 8 - Exposure Controls/Personal Protection

- **Components with limit monitoring values at workplace:**  
Glycerol (CAS-No: 56-81-5)

| Values | Control parameters                      | Regulations              |
|--------|---|--------------------------|
| TWA    | 10 mg/m <sup>3</sup> for mist           | British Columbia, Canada |
| TWA    | 3 mg/m <sup>3</sup> for respirable mist | British Columbia, Canada |
| TWA    | 10 mg/m <sup>3</sup>                    | Alberta, Canada          |
| TWAEV  | 10 mg/m <sup>3</sup>                    | Ontario, Canada          |
| TWAEV  | 10 mg/m <sup>3</sup>                    | Quebec, Canada           |
| TWA    | 10 mg/m <sup>3</sup>                    | USA                      |

- **Appropriate engineering controls:**  
Apply adequate ventilation including mechanical exhaust or laboratory fume hood. Follow standard laboratory practices.
- **Individual protection measures:**  
**Respiratory protection:**  
Use appropriate respirator if there is inadequate ventilation by following the government standards.  
**Hand protection:**  
Wear gloves and use proper glove removal technique to avoid skin contact. Discard gloves after use by following the applicable laboratory regulations. Wash and dry hands.  
**Eye/face protection:**  
Safety goggles with side-shields approved under appropriate government standards.  
**Skin/body protection:**  
Use appropriate clothing, footwear and any additional protection measures to protect from splashing or contamination.

## Article 9 – Physical and Chemical Properties

|   |   |
|---|---|
| <b>Appearance:</b> Colorless fluid.                   | <b>Danger of explosion:</b> Product does not present an explosion hazard. |
| <b>Odour/Odour Threshold:</b> Not determined.         | <b>Explosion limits:</b> Lower: 0.9 Vol %; Upper: 0.0 Vol %.              |
| <b>pH:</b> Not available.                             | <b>Decomposition temperature:</b> Not available.                          |
| <b>Melting point/freezing point:</b> Not determined.  | <b>Vapor pressure at 20 °C:</b> 0.1 hPa                                   |
| <b>Boiling point/Boiling range:</b> 100 °C.           | <b>Density:</b> Not determined.   |
| <b>Flash point:</b> > 100 °C.                         | <b>Relative density:</b> Not determined.                                  |
| <b>Flammability (solid, gaseous):</b> Not determined. | <b>Vapor density:</b> Not determined.                                     |
| <b>Ignition temperature:</b> 400 °C.                  | <b>Evaporation rate:</b> Not determined.                                  |
| <b>Auto-igniting:</b> Product is not self-igniting.   | <b>Solubility in / Miscibility with Water:</b> Fully miscible.            |

## Article 10 - Stability and Reactivity

- **Reactivity:** Stable under recommended transport and storage conditions.
- **Chemical stability:** Stable under recommended transport and storage conditions.
- **Possible hazardous reactions:** No dangerous reactions known.
- **Conditions to avoid:** Heat and moisture.
- **Incompatible materials:** Strong acids/bases, strong oxidizing/reducing agents.
- **Hazardous decomposition products:** Carbon oxides may formed under fire conditions; no known decomposition information for other decomposition products.

To place your order, please contact us by phone 1-866-9KINASE (54-6273), 1-(604)-232-4600,  
fax 1-604-232-4601 or by email: [orders@signalchem.com](mailto:orders@signalchem.com) - [www.signalchem.com](http://www.signalchem.com)

**FOR IN VITRO RESEARCH PURPOSES ONLY. NOT INTENDED FOR USE IN HUMAN OR ANIMALS.**

# SAFETY DATA SHEET

---

## Article 11 - Toxicological Information

---

- **Acute toxicity:** Not available.
- **LD/LC50:** Not available.
- **Skin corrosion/irritation:** Not available.
- **Serious eye damage/eye irritation:** Not available.
- **Respiratory or skin sensitization:** Not available.
- **Germ cell mutagenicity:** Not available.
- **Carcinogenicity:** No components are listed in IARC, or NTP, or OSHA, or ACGIH.
- **Reproductive toxicity:** Not available.
- **Teratogenicity:** Not available.
- **Specific target organ toxicity - single exposure/ - repeated exposure (GHS):** Not available.
- **Aspiration hazard:** Not available.
- **Potential health effects:**
  - Inhalation:** May be harmful if inhaled. May cause respiratory tract irritation.
  - Ingestion:** May be harmful if swallowed.
  - Skin:** May be harmful if absorbed through skin. May cause skin irritation.
  - Eyes:** May cause eye irritation.
- **Signs and Symptoms of Exposure:**
  - Prolonged or repeated exposure can cause: Nausea, Dizziness.
- **Synergistic effects:** Not available.

---

## Article 12 - Ecological Information

---

- **Eco-toxicity:** Not applicable.
- **Biodegradability:** Not applicable.
- **Bio-accumulative potential:** Not applicable.
- **Mobility in soil:** Not applicable.
- **PBT and vPvB assessment:** Not applicable.
- **Other adverse effects:** Not applicable.

---

## Article 13 - Disposal Considerations

---

- **Disposal methods:** In accordance to applicable national, regional, or local laws and regulations. For additional handling information and protection of employees please refer to Article 7 and 8.
- **Contaminated packaging:** Disposal should be made in accordance to official regulations. Use water or cleansing agents to clean the area.

---

## Article 14 - Transport Information

---

- **DOT:** Not dangerous goods.
- **IMDG:** Not dangerous goods.
- **IATA:** Not dangerous goods.

---

## Article 15 - Regulatory Information

---

- **WHMIS Classification:** Non-hazardous.
- **GHS label elements:** Not applicable.
- **Signal word:** Not applicable.
- **Hazard statements:** Not applicable.

---

## Article 16 - Other Information

---

The above information is believed to be correct but does not purport to be all-inclusive and shall be used only as a guide. SignalChem shall not be held liable for any damage resulting from handling or from contact with the above product. See the Technical Specification, Packing Slip, Invoice, and Product Catalog for additional terms and conditions of sale.

To place your order, please contact us by phone 1-866-9KINASE (54-6273), 1-(604)-232-4600,  
fax 1-604-232-4601 or by email: [orders@signalchem.com](mailto:orders@signalchem.com) - [www.signalchem.com](http://www.signalchem.com)

**FOR IN VITRO RESEARCH PURPOSES ONLY. NOT INTENDED FOR USE IN HUMAN OR ANIMALS.**