

## Anti-Methylated Lysine (Tri-ε-N-methyl)

Rabbit Polyclonal Antibody

**Catalog # L95-67R**

Lot # E372-6

### Cited Applications

For WB (1:2000), ELISA (1:2000), IHC (1:100), IF (1:100), IP (5ng/mg protein sample).

Ideal working dilutions for each application should be empirically determined by the investigator.

### Specificity

Recognizes proteins with tri-methylation on lysine residues (N-epsilon).

### Cross Reactivity

Pan-specific antibody. No reaction with acetylated, mono-methylated and di-methylated proteins.

### Host/Isotype/Clone#

Rabbit

### Immunogen

Methylated lysine-KLH conjugates.

### Formulation

PBS, 50% glycerol, pH7.

### Stability

Store at 4°C (add 0.1% NaN<sub>3</sub>) for several months, and at -20°C for longer periods. For optimal storage, aliquot antibody into smaller quantities after centrifugation and store at recommended temperature. For optimal performance, avoid repeated handling and multiple freeze/thaw cycles.

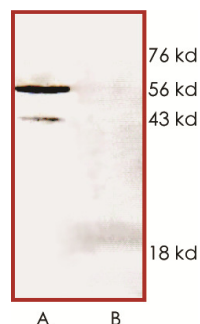
### Scientific Background

Post-translational modification of proteins and peptides is a robust way to regulate function of existing proteins or peptides. Methylation on lysine residues is one example of post-translational modification and is performed by a variety of protein methyl transferases in the cell. C/EBPs are extensively modified by methylation of lysine side chains and this regulated methylation profoundly affects the activity of C/EBPs (1). The Methylated Lysine antibody detects methylation on lysine residues in proteins and peptide.

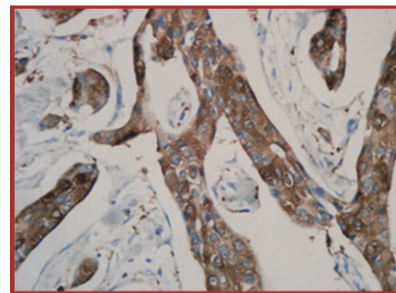
### References

1. Leutz, R. et al: Crosstalk between phosphorylation and multi-site arginine/lysine methylation in C/EBPs. *Transcr.* 2011 Jan;2(1):3-8.

### Sample Data



Representative western blot of the tri-methylated protein profile with Anti-Methylated Lysine (Tri-ε-N-methyl) (1:1000) using human melanoma (MMRU) cell lysate (A) and the MMRU lysate plus additional N-ε-tri-methyl lysine peptide inhibitor (50 ng/µl) (B).



Immunohistochemistry analysis of human tissue with Anti-Methylated Lysine (Tri-ε-N-methyl) (1:100).

## Anti-Methylated Lysine (Tri-ε-N-methyl)

Rabbit Polyclonal Antibody

Catalog Number

L95-67R

Specific Lot Number

E372-6

Purification

By affinity chromatography on a tri-methyl lysine agarose column

Concentration

0.25 µg/µl

Stability

1yr at -20°C from date of shipment

Storage & Shipping

Store product at -20°C. For optimal storage, aliquot antibody into smaller quantities after centrifugation and store at recommended temperature. For optimal performance, avoid repeated handling and multiple freeze/thaw cycles. Product shipped on ice packs.

To place your order, please contact us by phone 1-(604)-232-4600, fax 1-604-232-4601 or by email: [orders@signalchem.com](mailto:orders@signalchem.com)  
[www.signalchem.com](http://www.signalchem.com)

**FOR IN VITRO RESEARCH PURPOSES ONLY. NOT INTENDED FOR USE IN HUMAN OR ANIMALS.**