

## Anti-Phosphothreonine (Anti-pT)

Rabbit Polyclonal Antibody

**Catalog # T95-65R**

Lot # E360-5

### Cited Applications

For WB, ELISA, IP, IHC

*Ideal working dilutions for each application should be empirically determined by the investigator.*

### Specificity

Recognizes peptides and proteins phosphorylated on threonine residues.

### Cross Reactivity

Pan-specific antibody. No reaction to phosphotyrosine peptides and proteins.

### Host/Isotype/Clone#

Rabbit

### Immunogen

Phosphothreonine peptide-KLH conjugates

### Formulation

PBS, 50% glycerol, pH7.

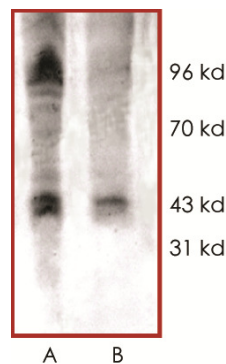
### Stability

Store at 4°C (add 0.1% NaN<sub>3</sub>) for several months, and at -20°C for longer periods. For optimal storage, aliquot antibody into smaller quantities after centrifugation and store at recommended temperature. For optimal performance, avoid repeated handling and multiple freeze/thaw cycles.

### Scientific Background

Post-translational modification of proteins and peptides is a robust way to regulate function of existing proteins or peptides. Protein phosphorylation represents one of the most abundant and important post-translational modifications of proteins. Phosphorylation on threonine residues in proteins is performed by a variety of threonine specific protein kinases in the cell which are involved in a wide variety of signaling networks. The Phospho-Threonine antibody detects phosphorylation on threonine residues in proteins and peptides.

### Sample Data



Representative western blot of the phosphothreonine protein profile with Anti-Phosphothreonine (1:500) using mouse spleen extract (A) and sodium vanadate-treated mouse spleen extract (B).

## Anti-Phosphothreonine (Anti-pT)

Rabbit Polyclonal Antibody

Catalog Number	T95-65R
Specific Lot Number	E360-5
Purification	Affinity chromatography
Concentration	0.25 µg/µL
Stability	1yr at -20°C from date of shipment
Storage & Shipping	Store product at -20°C. For optimal storage, aliquot antibody into smaller quantities after centrifugation and store at recommended temperature. For optimal performance, avoid repeated handling and multiple freeze/thaw cycles. Product shipped on ice packs.

To place your order, please contact us by phone 1-(604)-232-4600, fax 1-604-232-4601 or by email: [orders@signalchem.com](mailto:orders@signalchem.com)  
[www.signalchem.com](http://www.signalchem.com)

**FOR IN VITRO RESEARCH PURPOSES ONLY. NOT INTENDED FOR USE IN HUMAN OR ANIMALS.**