

Anti-AKT3

Rabbit Polyclonal Antibody

Catalog # A18-63R

Lot # D339-8

Cited Applications

- Western blot (1:1000)

Ideal working dilutions for each application should be empirically determined by the investigator.

Specificity

Recognizes the AKT3 protein

Cross Reactivity

- Western blot AKT3 from human and mouse cells

AKT3 from other species may also be detectable

Host

Rabbit

Immunogen

Protein Code: Q9Y243

Formulation

TBS, 50% glycerol

Stability

Store at 4°C (add 0.1% NaN₃) for several months, and at -20°C for longer periods. For optimal storage, aliquot target into smaller quantities after centrifugation and store at recommended temperature. For optimal performance, avoid repeated handling and multiple freeze/thaw cycles.

Scientific Background

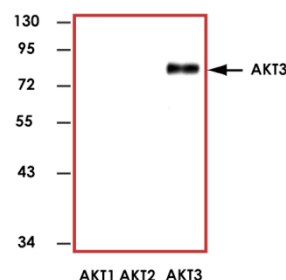
AKT 3 or Protein Kinase B (PKB) is a serine/threonine kinase that is a member of the AKT γ (PKB γ B family. AKT 3 is activated in cells exposed to diverse stimuli such as hormones, growth factors, and extracellular matrix components (1). AKT 3 phosphorylates and regulates the function of many cellular proteins involved in processes that include cellular metabolism, survival/apoptosis, and proliferation. Recent evidence indicates that AKT 3 is frequently overexpressed in many types of human cancers including breast and prostate (2).

References

1. Coffey, P.J. et al: Protein kinase B (c-Akt): a multifunctional mediator of phosphatidylinositol 3-kinase activation. *Biochem J.* 1998 Oct 1; 335 (Pt 1): 1-13.
2. Anderson, K.E. et al: Translocation of PDK-1 to the plasma membrane is important in allowing PDK-1 to activate protein kinase B. *Curr Biol.* 1998 Jun 4;8(12): 684-91.

To place your order, please contact us by phone 1-(604)-232-4600, fax 1-604-232-4601 or by email: orders@signalchem.com
www.signalchem.com

Sample Data



Representative western blot with Anti-AKT3 (1:1000) using 20 ng of human full length recombinant AKT1, AKT2, and AKT3.

Anti-AKT3

Rabbit Polyclonal Antibody

Catalog Number

A18-63R

Specific Lot Number

D339-8

Purification

Affinity Chromatography

Concentration

1.0 µg/µL

Stability

1 yr At -20°C from date of shipment

Storage & Shipping

Store product at -20°C. For optimal storage, aliquot antibody into smaller quantities after centrifugation and store at recommended temperature. For optimal performance, avoid repeated handling and multiple freeze/thaw cycles. Product shipped on ice packs.