

Anti-CHK2

Mouse Monoclonal Antibody

Catalog # C48-60M

Lot # D339-4

Cited Applications

- Western blot (1:1000)

Ideal working dilutions for each application should be empirically determined by the investigator.

Specificity

Recognizes the CHK2 protein

Cross Reactivity

- Western blot CHK2 from human and mouse cells

CHK2 from other species may also be detectable

Host/Isotype/Clone#

Mouse, IgG1, 7F9

Immunogen

Human full length recombinant CHK1

Formulation

0.1M TRIS pH 8.0, 0.1M glycine

Stability

Store at 4°C (add 0.1% NaN₃) for several months, and at -20°C for longer periods. For optimal storage, aliquot target into smaller quantities after centrifugation and store at recommended temperature. For optimal performance, avoid repeated handling and multiple freeze/thaw cycles.

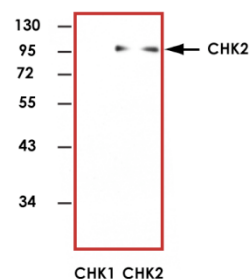
Scientific Background

CHK2 is rapidly phosphorylated and activated in response to replication blocks and DNA damage; the response to DNA damage occurs in an ataxia telangiectasia mutated (ATM)-dependent manner (1). Expression of wild-type Chk2 leads to increased p53 stabilization after DNA damage, whereas expression of a dominant-negative Chk2 mutant abrogated both phosphorylation of p53 on Ser-20 and p53 stabilization (2).

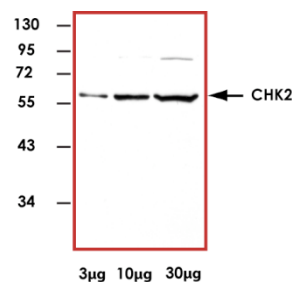
References

1. Matsuoka, S. et al: Linkage of ATM to cell cycle regulation by the Chk2 protein kinase. *Science*. 1998 Dec 4;282(5395):1893-7.
2. Chehab NH. et al: Chk2/hCds1 functions as a DNA damage checkpoint in G(1) by stabilizing p53. *Genes Dev*. 2000 Feb 1;14(3):278-88.

Sample Data



Representative western blot with Anti-CHK2 (1:1000) using 20 ng of GST-tagged human full length recombinant CHK1 and CHK2.



Representative western blot with Anti-CHK2 (1:1000) using 3 µg, 10 µg, and 30 µg of 293T cell lysate.

Anti-CHK2

Mouse Monoclonal Antibody

Catalog Number

C48-60M

Specific Lot Number

D339-4

Purification

Affinity Chromatography

Concentration

1.0 µg/µL

Stability

1 yr At -20°C from date of shipment

Storage & Shipping

Store product at -20°C. For optimal storage, aliquot antibody into smaller quantities after centrifugation and store at recommended temperature. For optimal performance, avoid repeated handling and multiple freeze/thaw cycles. Product shipped on ice packs.

To place your order, please contact us by phone 1-(604)-232-4600, fax 1-604-232-4601 or by email: orders@signalchem.com
www.signalchem.com

FOR IN VITRO RESEARCH PURPOSES ONLY. NOT INTENDED FOR USE IN HUMAN OR ANIMALS.