

Anti-ASK1

Mouse Monoclonal Antibody

Catalog # M13-60M

Lot # D339-2

Cited Applications

- Western blot (1:1000)

Ideal working dilutions for each application should be empirically determined by the investigator.

Specificity

Recognizes the ASK1 protein

Cross Reactivity

- Western blot of human ASK1

ASK1 from other species may also be detectable

Host /Clone#

Mouse, A1

Immunogen

Human recombinant ASK1 (649-946)

Formulation

10mM PBS,pH 7.2

Stability

Store at 4°C (add 0.1% NaN₃) for several months, and at -20°C for longer periods. For optimal storage, aliquot antibody into smaller quantities after centrifugation and store at recommended temperature. For optimal performance, avoid repeated handling and multiple freeze/thaw cycles.

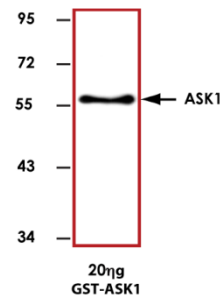
Scientific Background

ASK1, also known as MAPKKK5, activates MKK3, MKK4 (SEK1), and MKK6. Overexpression of ASK1 induces apoptotic cell death, and ASK1 is activated in cells treated with tumor necrosis factor-alpha (1). ASK1 interacts with members of the TRAF family and is activated by TRAF2 in the TNF-signaling pathway. After activation by TRAF2, ASK1 activates MKK4, which in turn activates JNK. Thus, ASK1 is a mediator of TRAF2-induced JNK activation (2).

References

1. Ichijo, H. et al: Induction of apoptosis by ASK1, a mammalian MAPKKK that activates SAPK/JNK and p38 signaling pathways. *Science* 275: 90-94, 1997.
2. Nishitoh, H. et al: ASK1 is essential for JNK/SAPK activation by TRAF2. *Molec. Cell* 2: 389-395, 1998.

Sample Data



Representative western blot with Anti-ASK1 (1:1000) using 20 ng of GST-tagged human recombinant ASK1.

Anti-ASK1

Mouse Monoclonal Antibody

Catalog Number

M13-60M

Specific Lot Number

D339-2

Purification

Affinity Chromatography

Format

25 µg in 25 µl

Concentration

1.0 µg/µL

Stability

1yr at -20°C from date of shipment

Storage & Shipping

Store product at -20°C. For optimal storage, aliquot antibody into smaller quantities after centrifugation and store at recommended temperature. For optimal performance, avoid repeated handling and multiple freeze/thaw cycles. Product shipped on ice packs.

To place your order, please contact us by phone 1-(604)-232-4600, fax 1-604-232-4601 or by email: orders@signalchem.com
www.signalchem.com

FOR IN VITRO RESEARCH PURPOSES ONLY. NOT INTENDED FOR USE IN HUMAN OR ANIMALS.