

Rb Protein

Recombinant protein expressed in *E. coli* cells

Catalog # R05-55G

Lot # D278-1

Product Description

Recombinant human Rb (773-928) was expressed in *E. coli* cells using an N-terminal GST tag. The gene accession number is [NM_000321](#).

Gene Aliases

RB1, OSRC

Formulation

Recombinant protein stored in 50mM Tris-HCl, pH 7.5, 150mM NaCl, 0.25mM DTT, 0.1mM PMSF, 25% glycerol.

Storage and Stability

Store product at -70°C . For optimal storage, aliquot target into smaller quantities after centrifugation and store at recommended temperature. For most favorable performance, avoid repeated handling and multiple freeze/thaw cycles.

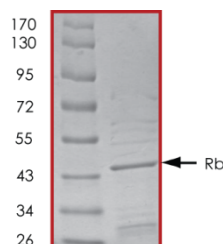
Scientific Background

Rb is the retinoblastoma gene product and was the first tumor suppressor cloned. Rb is a negative regulator of the cell cycle through its ability to bind the transcription factor E2F and repress transcription of genes required for S phase (1). Rb can bind to MDM2 and this overcomes both the antiapoptotic function of MDM2 and the MDM2-dependent degradation of p53. Rb associates with the Polycomb group (PcG) proteins to form a repressor complex that blocks entry of cells into mitosis (2). Rb co-localizes with nuclear PcG complexes and is important for association of PcG complexes with nuclear targets.

References

1. Hanahan, D. et al: The hallmarks of cancer. *Cell* 100: 57-70, 2000.
2. Dahiya, A. et al: Linking the Rb and Polycomb pathways. *Molec. Cell* 8: 557-568, 2001.

Purity



The purity was determined to be **>85%** by densitometry.
Approx. MW **44 kDa**.

Rb Protein

Recombinant protein expressed in *E. coli* cells

Catalog Number R05-55G

Specific Lot Number D278-1

Purity >85%
Concentration 0.2 $\mu\text{g}/\mu\text{l}$

Stability 1 yr at -70°C from date of shipment

Storage & Shipping Store product at -70°C . For optimal storage, aliquot target into smaller quantities after centrifugation and store at recommended temperature. For most favorable performance, avoid repeated handling and multiple freeze/thaw cycles. Product shipped on dry ice.

To place your order, please contact us by phone 1-(604)-232-4600, fax 1-604-232-4601 or by email: orders@signalchem.com
www.signalchem.com

FOR IN VITRO RESEARCH PURPOSES ONLY. NOT INTENDED FOR USE IN HUMAN OR ANIMALS.