

Rel B Protein

Full-length recombinant protein expressed in Sf9 cells

Catalog # R30-30H

Lot # D085-2

Product Description

Recombinant full-length human Rel B was expressed by baculovirus in Sf9 insect cells using an N-terminal His tag. The gene accession number is [NM_006509](#).

Gene Aliases

IREL, I-REL

Formulation

Recombinant protein stored in 50mM sodium phosphate, pH 7.0, 300mM NaCl, 150mM imidazole, 0.1mM PMSF, 0.25mM DTT, 25% glycerol.

Storage and Stability

Store product at -70°C . For optimal storage, aliquot target into smaller quantities after centrifugation and store at recommended temperature. For most favorable performance, avoid repeated handling and multiple freeze/thaw cycles.

Scientific Background

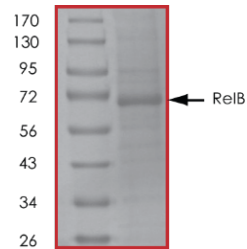
Rel B is part of the NF κ B complex and forms heterodimeric complexes with p50 (NF κ B1) and p52 (NF κ B2) (1). The homodimeric complexes of Rel B alone do not show DNA-binding activity. IHC analysis has shown that Rel B expression correlated with dendritic cell activation. NF κ B-inducing kinase NIK is required for osteoclastogenesis in response to pathologic stimuli and overexpression of Rel B rescues differentiation of mouse NIK $-/-$ osteoclast precursors. Rel B is required for RANKL-induced osteoclastogenesis *in vitro* and for TNF α -induced bone resorption *in vivo*. This indicates that the alternative NF κ B pathway, via Rel B, plays an essential and unique role in RANKL signaling toward osteoclast development (2).

References

- Bours, V. et al: Human RelB (I-Rel) functions as a kappa-B site-dependent transactivating member of the family of Rel-related proteins. *Oncogene* 9: 1699-1702, 1994.
- Vaira, S. Et al: RelB is the NF-kappa-B subunit downstream of NIK responsible for osteoclast differentiation. *Proc. Nat. Acad. Sci.* 105: 3897-3902, 2008.

To place your order, please contact us by phone 1-(604)-232-4600, fax 1-604-232-4601 or by email: orders@signalchem.com
www.signalchem.com

Purity



The purity of Rel B was determined to be **>85%** by densitometry. Approx. MW **68kDa**.

Rel B Protein

Full-length recombinant protein expressed in E. coli cells

Catalog #	R30-30H
Lot #	D085-2
Purity	>85%
Concentration	0.2 µg/µl
Stability	1yr At -70°C from date of shipment
Storage & Shipping	Store product at -70°C . For optimal storage, aliquot target into smaller quantities after centrifugation and store at recommended temperature. For most favorable performance, avoid repeated handling and multiple freeze/thaw cycles. Product shipped on dry ice.

MATERIAL SAFETY DATA SHEET

Article 1 - Product Identification and Use

Product Name: Rel B Protein

Catalog # R30-30H

This product is sold only for research use by qualified laboratory personnel, and is not to be used as a drug, medical device, food additive, cosmetic, nor household chemical. It is not to be used in diagnostic, therapeutic, consumer, agricultural, nor pesticidal applications.

Manufacturer's Name: SignalChem Pharmaceuticals Inc.
Street Address: 550-5600 Parkwood Way
City, Prov. Postal Code: Richmond, BC, V6V 2M2
Fax: 604-232-4601
EMERGENCY PHONE: 604-232-4600

Article 2 - Hazardous Ingredients

NOT AVAILABLE. We are not aware of any hazards associated with this product or its ingredients, but the chemical, physical, and toxicological properties of this product have not been investigated thoroughly. Observe normal laboratory precautions.

Article 3 - Physical Data

This product consists of purified protein in sodium phosphate buffer shipped on dry ice. The physical properties of this product have not been investigated thoroughly.

Article 4 - Fire and Explosion Hazard

NOT APPLICABLE

Article 5 - Reactivity Data

NOT APPLICABLE

Article 6 - Toxicologically Data

May be harmful by inhalation, ingestion, or skin absorption. The toxicological properties of this product have not been investigated thoroughly. Exercise due caution.

Article 7 - Preventative Measures

Wear chemical safety goggles and compatible chemical-resistant gloves. Avoid inhalation, contact with eyes, skin or clothing.

*****MULTIPLE COMPONENT SPILL OR LEAK PROCEDURES*****

- Wear protective equipment.
 - Absorb on sand or vermiculite and place in closed containers for disposal.
 - Observe all federal, state and local environmental regulations.
-

Article 8 - First Aid Measures

- If swallowed, wash out mouth with water, provided person is conscious. Call a physician.
 - In case of skin contact, flush with copious amounts of water for at least 15 minutes. Remove contaminated clothing and shoes. If a rash or other irritation develops, call a physician.
 - If inhaled, remove to fresh air. If breathing becomes difficult, call a physician.
 - In case of eye contact, flush with copious amounts of water for at least 15 minutes while separating the eyelids with fingers. Call a physician.
-

Article 9 - Preparation

Prepared by: Jun Yan

Phone#: 1-866-954-6273

The above information is believed to be correct but does not purport to be all-inclusive and shall be used only as a guide. SignalChem shall not be held liable for any damage resulting from handling or from contact with the above product. See the Technical Specification, Packing Slip, Invoice, and Product Catalogue for additional terms and conditions of sale.

To place your order, please contact us by phone 1-(604)-232-4600, fax 1-604-232-4601 or by email: orders@signalchem.com
www.signalchem.com

FOR IN VITRO RESEARCH PURPOSES ONLY. NOT INTENDED FOR USE IN HUMAN OR ANIMALS.