

Rb Protein

Recombinant protein expressed in *E. coli* cells

Catalog # R05-56G

Lot # C353-1

Product Description

Recombinant human Rb (48 – 378) was expressed in *E. coli* cells using an N-terminal GST tag. The gene accession number is [NM_000321](#).

Gene Aliases

RB1, OSRC

Formulation

Recombinant protein stored in 50mM Tris-HCl, pH 7.5, 150mM NaCl, 0.25mM DTT, 0.1mM PMSF, 25% glycerol.

Storage and Stability

Store product at -70°C . For optimal storage, aliquot target into smaller quantities after centrifugation and store at recommended temperature. For most favorable performance, avoid repeated handling and multiple freeze/thaw cycles.

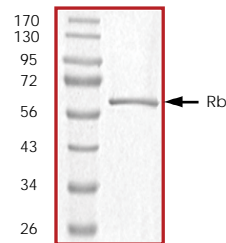
Scientific Background

Rb is the retinoblastoma gene product and was the first tumor suppressor cloned. Rb is a negative regulator of the cell cycle through its ability to bind the transcription factor E2F and repress transcription of genes required for S phase (1). Rb can bind to MDM2 and this overcomes both the antiapoptotic function of MDM2 and the MDM2-dependent degradation of p53. Rb associates with the Polycomb group (PcG) proteins to form a repressor complex that blocks entry of cells into mitosis (2). Rb colocalizes with nuclear PcG complexes and is important for association of PcG complexes with nuclear targets.

References

1. Hanahan, D. et al: The hallmarks of cancer. *Cell* 100: 57-70, 2000.
2. Dahiya, A. et al: Linking the Rb and Polycomb pathways. *Molec. Cell* 8: 557-568, 2001.

Purity



The purity was determined to be **>90%** by densitometry.
Approx. MW **62kDa**.

Rb Protein

Recombinant protein expressed in *E. coli* cells

Catalog Number R05-56G

Specific Lot Number C353-1

Purity	>90%
Concentration	0.2 $\mu\text{g}/\mu\text{l}$
Stability	1yr At -70°C from date of shipment
Storage & Shipping	Store product at -70°C . For optimal storage, aliquot target into smaller quantities after centrifugation and store at recommended temperature. For most favorable performance, avoid repeated handling and multiple freeze/thaw cycles. Product shipped on dry ice.

To place your order, please contact us by phone 1-(604)-232-4600, fax 1-604-232-4601 or by email: orders@signalchem.com
www.signalchem.com

FOR IN VITRO RESEARCH PURPOSES ONLY. NOT INTENDED FOR USE IN HUMAN OR ANIMALS.