

## METTL1 Protein

Full length human recombinant protein expressed in Sf9 cells

**Catalog # M321-30G**

Lot # C2224-3

### Product Description

Recombinant full-length human METTL1 was expressed by baculovirus in Sf9 insect cells using an N-terminal GST tag. The gene accession number is [NM\\_005371](#).

### Gene Aliases

C12orf1; TRM8; TRMT8; YDL201w

### Formulation

Recombinant protein stored in 50mM Tris-HCl, pH 7.5, 150mM NaCl, 10mM glutathione, 0.1mM EDTA, 0.25mM DTT, 0.1mM PMSF, 25% glycerol.

### Storage and Stability

Store product at -70°C. For optimal storage, aliquot target into smaller quantities after centrifugation and store at recommended temperature. For most favorable performance, avoid repeated handling and multiple freeze/thaw cycles.

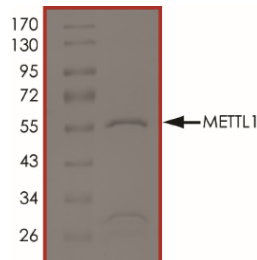
### Scientific Background

Methyltransferase Like 1 (METTL1) catalyzes the formation of N (7)-methylguanine at position 46 (m7G46) in tRNA. It belongs to the methyltransferase superfamily. METTL1 is involved in the pathway N (7)-methylguanine-tRNA biosynthesis, which is part of tRNA modification.

### References

1. <http://www.uniprot.org/uniprot/Q9P0J1>.
2. Maj MC, et al: Pyruvate dehydrogenase phosphatase deficiency: identification of the first mutation in two brothers and restoration of activity by protein complementation. J Clin Endocrinol Metab. 90(7):4101-7, 2005.

### Purity



The purity of METTL1 was determined to be **>75%** by densitometry. Approx. MW **~57kDa**.

## METTL1 Protein

Full length human recombinant protein expressed in Sf9 cells

Catalog Number	M321-30G
Lot #	C2224-3
Purity	>75%
Concentration	0.1 µg/µl
Stability	1yr At -70°C from date of shipment
Storage & Shipping	Store product at -70°C. For optimal storage, aliquot target into smaller quantities after centrifugation and store at recommended temperature. For most favorable performance, avoid repeated handling and multiple freeze/thaw cycles. Product shipped on dry ice.

To place your order, please contact us by phone 1-(604)-232-4600, fax 1-604-232-4601 or by email: [orders@signalchem.com](mailto:orders@signalchem.com)  
[www.signalchem.com](http://www.signalchem.com)

**FOR IN VITRO RESEARCH PURPOSES ONLY. NOT INTENDED FOR USE IN HUMAN OR ANIMALS.**