

CDK2 Protein

Full length human recombinant protein expressed in Sf9 cells

Catalog # C29-30G

Lot # C2139-7

Product Description

Recombinant full-length human CDK2 was expressed by baculovirus in Sf9 insect cells using an N-terminal GST tag. The gene accession number is [NM_001798](#).

Gene Aliases

p33 (CDK2)

Formulation

Recombinant protein stored in 50mM Tris-HCl, pH 7.5, 150mM NaCl, 10mM glutathione, 0.1mM EDTA, 0.25mM DTT, 0.1mM PMSF, 25% glycerol.

Storage and Stability

Store product at -70°C. For optimal storage, aliquot target into smaller quantities after centrifugation and store at recommended temperature. For most favorable performance, avoid repeated handling and multiple freeze/thaw cycles.

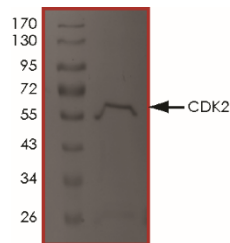
Scientific Background

CDK2 is a member of the Cyclin-Dependent Kinase family that is ubiquitously expressed. CDK2 is a catalytic subunit of the cyclin-dependent protein kinase complex, whose activity is restricted to the G1-S phase, and essential for cell cycle G1/S phase transition. CDK2 associates with and is regulated by the regulatory subunits of the complex including Cyclin A or E, CDK inhibitor p21Cip1 (CDKN1A) and p27Kip1 (CDKN1B) (1). CDK2 phosphorylates multiple cellular substrates including SMAD3 and FOXO1. Phosphorylation of FOXO1 leads to its inhibition (2).

References

1. Levkau, B. et al: Cleavage of p21 (Cip1/Waf1) and p27 (Kip1) mediates apoptosis in endothelial cells through activation of Cdk2: role of a caspase cascade. *Molec. Cell* 1: 553-563, 1998.
2. Huang, H. et al: CDK2-dependent phosphorylation of FOXO1 as an apoptotic response to DNA damage. *Science* 314: 294-297, 2006.

Purity



The purity of CDK2 was determined to be **>95%** by densitometry. Approx. MW **~58kDa**.

CDK2 Protein

Full length human recombinant protein expressed in Sf9 cells

Catalog #	C29-30G
Lot #	C2139-7
Purity	>95%
Concentration	0.1 µg/µl
Stability	1yr at -70°C from date of shipment
Storage & Shipping	Store product at -70°C. For optimal storage, aliquot target into smaller quantities after centrifugation and store at recommended temperature. For most favorable performance, avoid repeated handling and multiple freeze/thaw cycles. Product shipped on dry ice.

To place your order, please contact us by phone 1-(604)-232-4600, fax 1-604-232-4601 or by email: orders@signalchem.com
www.signalchem.com

FOR IN VITRO RESEARCH PURPOSES ONLY. NOT INTENDED FOR USE IN HUMAN OR ANIMALS.