

Anti-Phospho-STAT6 (Tyr641)

Rabbit Polyclonal Antibody

Catalog # **S57-365R**

Lot # B3216-84

Cited Applications

ELISA, WB

Ideal working dilutions for each application should be empirically determined by the investigator.

Specificity

Recognizes the human STAT6 protein phosphorylated at Tyrosine 641

Cross Reactivity

Human

Host/Isotype/Clone#

Rabbit, IgG

Immunogen

The antibody was produced against synthesized peptide corresponding to residues surrounding Tyr641 of human STAT6 protein

Formulation

0.02 M Potassium Phosphate, 0.15 M Sodium Chloride, pH 7.2 + 0.01% (w/v) Sodium Azide

Stability

1yr at -20°C from date of shipment

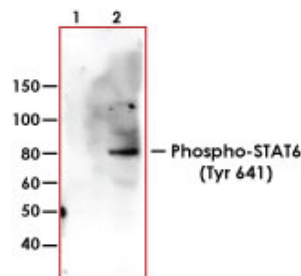
Scientific Background

The STAT6 protein is a member of the STAT family of transcription factors that are activated by cytokines and phosphorylated by the receptor associated kinases. STATs form homo- or heterodimers that translocate to the cell nucleus where they act as transcription activators (1). STAT6 plays a central role in exerting IL4 mediated biological responses. STAT6 induces the expression of BCL2L1/BCL-XL, which is responsible for the anti-apoptotic activity of IL4. STAT6 mRNA has been detected in various tissues including peripheral blood lymphocytes, colon, intestine, ovary, prostate, thymus, spleen, kidney, liver, lung and placenta. STAT6 is critically involved in Th2 immune response (2).

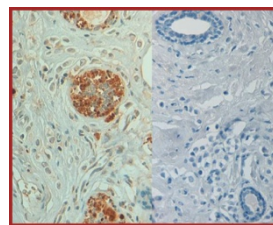
References:

1. Weidinger, S. et al: Association of a STAT 6 haplotype with elevated serum IgE levels in a population based cohort of white adults. J. Med. Genet. 41: 658-663, 2004.
2. Wang, W. et al: The susceptibility to experimental myasthenia gravis of STAT6^{-/-} and STAT4^{-/-} BALB/c mice suggests a pathogenic role of Th1 cells. J. Immun. 172: 97-103, 2004.

Sample Data



Western Blot of Anti-Phospho-STAT6 (Tyr641) (1:1,000) dilution. Lane 1: unstimulated Hela cell lysate. Lane 2: IL-4 stimulated Hela cell lysate. Load: 10 µg per lane.



Immunohistochemical analysis of human breast carcinoma p9 tissue (left) with negative control (right) using Anti-Phospho-STAT6 (Tyr641).

Anti-Phospho-STAT6 (Tyr641)

Rabbit Polyclonal Antibody

Catalog #	S57-365R
Lot #	B3216-84
Purification	Immunoaffinity chromatography
Stability	1yr at -20°C from date of shipment
Storage & Shipping	Store product at -20°C. For optimal storage, aliquot antibody into smaller quantities after centrifugation and store at recommended temperature. For optimal performance, avoid repeated handling and multiple freeze/thaw cycles. Product shipped on ice packs.

To place your order, please contact us by phone 1-(604)-232-4600, fax 1-604-232-4601 or by email: orders@signalchem.com
www.signalchem.com

FOR IN VITRO RESEARCH PURPOSES ONLY. NOT INTENDED FOR USE IN HUMAN OR ANIMALS.