

## Anti-Phospho-ROCK2 (Tyr256)

Rabbit Polyclonal Antibody

**Catalog # R11-65R**

Lot # B3216-74

### Cited Applications

ELISA, IHC, WB

*Ideal working dilutions for each application should be empirically determined by the investigator.*

### Specificity

Recognizes the human ROCK-2 protein phosphorylated at Tyrosine 256

### Cross Reactivity

Human

### Host/Isotype/Clone#

Rabbit, IgG

### Immunogen

The antibody was produced against synthesized peptide corresponding to residues surrounding Tyrosine 256 of human ROCK-2

### Formulation

0.02 M Potassium Phosphate, 0.15 M Sodium Chloride, pH 7.2 + 0.01% (w/v) Sodium Azide

### Stability

1yr at -20°C from date of shipment

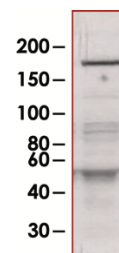
### Scientific Background

ROCK2 is a ubiquitously expressed serine/threonine kinase localized in the nucleus that regulates cytokinesis, smooth muscle contraction, the formation of actin stress fibers and focal adhesions, and the activation of the c-fos serum response element (1). ROCK2 is an immediate downstream target of the small GTPase RhoA. ROCK2 may play a pivotal role in cardiovascular diseases such as vasospastic angina, ischemic stroke, and heart failure. Inhibition of ROCKs by statins or other selective inhibitors leads to the upregulation and activation of endothelial nitric oxide synthase (eNOS) and reduction of vascular inflammation and atherosclerosis (2).

### References:

1. Zhao, Z. et al: Rho-associated kinases play a role in endocardial cell differentiation and migration. *Dev Biol.* 2004 Nov 1;275(1):183-91.
2. Noma, K. et al: Physiological role of ROCKs in the cardiovascular system. *Am J Physiol Cell Physiol.* 2006 Mar;290(3):C661-8.

### Sample Data



Western blot using affinity purified Anti-Phospho-ROCK2 (Tyr256) (1:1,000) shows detection of phosphorylated ROCK-2 in transfected 293T cells. Lane 1 shows lysate expressing exogenous ROCK-2 where the insert contains the transversion Y256A. Lane 2 shows the lysate expressing WT ROCK-2.

## Anti-Phospho-ROCK2 (Tyr256)

Rabbit Polyclonal Antibody

Catalog # R11-65R

Lot # B3216-74

Purification

Stability

Storage & Shipping

Immunoaffinity chromatography

1yr at -20°C from date of shipment

Store product at -20°C. For optimal storage, aliquot antibody into smaller quantities after centrifugation and store at recommended temperature. For optimal performance, avoid repeated handling and multiple freeze/thaw cycles. Product shipped on ice packs.

To place your order, please contact us by phone 1-(604)-232-4600, fax 1-604-232-4601 or by email: [orders@signalchem.com](mailto:orders@signalchem.com)  
[www.signalchem.com](http://www.signalchem.com)

**FOR IN VITRO RESEARCH PURPOSES ONLY. NOT INTENDED FOR USE IN HUMAN OR ANIMALS.**