

## Anti-PCNA

Rabbit Polyclonal Antibody

Catalog # **P11-363R**

Lot # B3216-72

### Cited Applications

ELISA, WB

Ideal working dilutions for each application should be empirically determined by the investigator.

### Specificity

Recognizes the human PCNA protein

### Cross Reactivity

Human, Monkey, Dog, Mouse, Rat, Bovine, Chicken, Fish and Xenopus

### Host/Isotype/Clone#

Rabbit, IgG

### Immunogen

The antibody was produced against synthesized peptide corresponding to an internal region of human PCNA

### Formulation

0.02 M Potassium Phosphate, 0.15 M Sodium Chloride, pH 7.2 + 0.01% (w/v) Sodium Azide

### Stability

1yr at -20°C from date of shipment

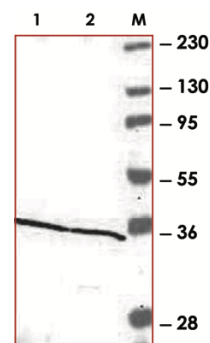
### Scientific Background

PCNA is a nuclear protein whose appearance correlates with the proliferative state of the cells and is a cofactor of DNA polymerase delta. PCNA is a homotrimer and helps increase the processivity of leading strand synthesis during DNA replication. In response to DNA damage, PCNA is ubiquitinated and is involved in the RAD6-dependent DNA repair pathway. Immunofluorescence studies have shown that p300 may play a role in DNA repair synthesis through its interaction with PCNA. In vitro and in vivo p300 forms a complex with PCNA that does not depend on the S phase of the cell cycle and stimulates DNA synthesis in vitro (1). PCNA interacts with the Williams syndrome transcription factor (WSTF) allowing it to target to DNA replication foci, that then allows recruitment of SNF2H (2).

### References:

1. Hasan, S. et al: Transcription coactivator p300 binds PCNA and may have a role in DNA repair synthesis. Nature 410: 387-391, 2001.
2. Poot, R. A. et al: The Williams syndrome transcription factor interacts with PCNA to target chromatin remodelling by ISWI to replication foci. Nature Cell Biol. 6: 1236-1244, 2004.

### Sample Data



Western blot using affinity purified Anti-PCNA antibody (1:1000) shows detection of PCNA protein in HEK293 (lane 1) and Jurkat (lane 2) whole cell extracts. Load: ~25 µg of lysate per lane.

## Anti-PCNA

Rabbit Polyclonal Antibody

Catalog #	P11-363R
Lot #	B3216-72
Purification	Immunoaffinity chromatography
Stability	1yr at -20°C from date of shipment
Storage & Shipping	Store product at -20°C. For optimal storage, aliquot antibody into smaller quantities after centrifugation and store at recommended temperature. For optimal performance, avoid repeated handling and multiple freeze/thaw cycles. Product shipped on ice packs.

To place your order, please contact us by phone 1-(604)-232-4600, fax 1-604-232-4601 or by email: [orders@signalchem.com](mailto:orders@signalchem.com)  
[www.signalchem.com](http://www.signalchem.com)

**FOR IN VITRO RESEARCH PURPOSES ONLY. NOT INTENDED FOR USE IN HUMAN OR ANIMALS.**