

## Anti-RABBIT, Biotin Conjugated

Goat Polyclonal Antibody

**Catalog # R33-62BG**

Lot # B3216-7

### Cited Applications

ELISA, IHC, WB

Ideal working dilutions for each application should be empirically determined by the investigator.

### Specificity

Recognizes IgG (H&L)

### Cross Reactivity

Human

### Host/Isotype/Clone#

Rabbit, IgG

### Immunogen

The antibody was produced against Rabbit IgG whole molecule in goats

### Formulation

0.02 M Potassium Phosphate, 0.15 M Sodium Chloride, pH 7.2 + 0.01% (w/v) Sodium Azide.

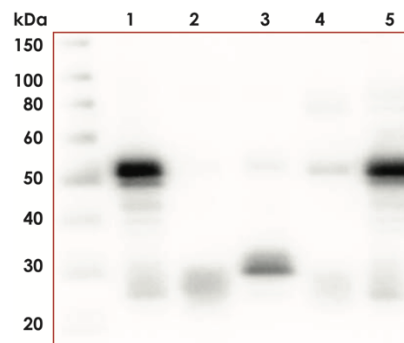
### Stability

1yr at -20°C from date of shipment

### Scientific Background

Anti-Rabbit IgG whole molecule antibody generated in goat detects specifically Rabbit IgG whole molecule. This secondary antibody anti-Rabbit is ideal for investigators who routinely perform ELISA, Sandwich ELISA, titration assays, western-blot, immunoprecipitation and more generally immunoassays.

### Sample Data



Western Blot of Anti-RABBIT, Biotin Conjugated (1:1,000). Lane M: 3 µl Molecular Ladder. Lane 1: Rabbit IgG whole molecule. Lane 2: Rabbit IgG F(ab) Fragment Lane 3: Rabbit IgG F(c) Fragment. Lane 4: Rabbit IgM Whole Molecule. Lane 5: Normal Rabbit Serum. All samples were reduced. Load: 50 ng per lane.

## Anti-RABBIT, Biotin Conjugated

Goat Polyclonal Antibody

Catalog #	R33-62BG
Lot #	B3216-7
Purification	Immunoaffinity chromatography followed by solid phase adsorption.
Stability	1yr at -20°C from date of shipment
Storage & Shipping	Store product at -20°C. For optimal storage, aliquot antibody into smaller quantities after centrifugation and store at recommended temperature. For optimal performance, avoid repeated handling and multiple freeze/thaw cycles. Product shipped on ice packs.

To place your order, please contact us by phone 1-(604)-232-4600, fax 1-604-232-4601 or by email: [orders@signalchem.com](mailto:orders@signalchem.com)  
[www.signalchem.com](http://www.signalchem.com)

**FOR IN VITRO RESEARCH PURPOSES ONLY. NOT INTENDED FOR USE IN HUMAN OR ANIMALS.**