

Anti-PACRG

Rabbit Polyclonal Antibody

Catalog # **P216-363R**

Lot # B3216-69

Cited Applications

ELISA, WB

Ideal working dilutions for each application should be empirically determined by the investigator.

Specificity

Recognizes the human PACRG protein

Cross Reactivity

Human, Mouse and Chicken

Host/Isotype/Clone#

Rabbit, IgG

Immunogen

The antibody was produced against synthesized peptide corresponding to amino acids 204-215 of human PACRG protein

Formulation

0.02 M Potassium Phosphate, 0.15 M Sodium Chloride, pH 7.2 + 0.01% (w/v) Sodium Azide

Stability

1yr at -20°C from date of shipment

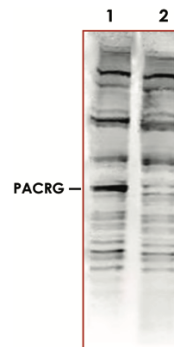
Scientific Background

PACRG (also known as Parkin coregulated gene protein and PARK2 coregulated) is a gene located very close to parkin, in reverse orientation on the chromosome. It is thought to be co-transcribed with parkin by a bi-directional promoter between the two genes. PACRG is expressed in all immune tissues, spleen, lymph nodes, thymus, tonsils, leukocyte and bone marrow and is also expressed in heart, brain, skeletal muscle, kidney, lung and pancreas. PACRG is expressed in primary Schwann cells and very weakly by monocyte-derived macrophages, which are the primary host cells of Mycobacterium leprae, the causative agent of leprosy. Splice variants have been described for this protein.

References:

1. Mira, M.T., et al.: Susceptibility to leprosy is associated with PARK2 and PACRG. *Nature*. 2004: 427 (6975); 636-640.
2. Imai, Y., et al.: A product of the human gene adjacent to parkin is a component of Lewy bodies and suppresses Pael receptor-induced cell death. *J. Biol. Chem.* 2003: 278 (51); 51901-51910.
3. West, A.B., et al.: Identification of a novel gene linked to parkin via a bi-directional promoter. *J. Mol. Biol.* 2003: 326 (1); 11-19.

Sample Data



Western blot using affinity purified Anti-PACRG (1:1,500 dilution) shows detection of a band ~40 kDa corresponding to human PACRG (arrowhead lane 1). Specific reactivity with this band is blocked when the antibody is pre-incubated with the immunizing peptide (lane 2). Load: ~ 35 µg of a mouse embryonic fibroblast (MEF) whole cell lysate.

Anti-PACRG

Rabbit Polyclonal Antibody

Catalog #	P216-363R
Lot #	B3216-69
Purification	Immunoaffinity chromatography
Stability	1yr at -20°C from date of shipment
Storage & Shipping	Store product at -20°C. For optimal storage, aliquot antibody into smaller quantities after centrifugation and store at recommended temperature. For optimal performance, avoid repeated handling and multiple freeze/thaw cycles. Product shipped on ice packs.

To place your order, please contact us by phone 1-(604)-232-4600, fax 1-604-232-4601 or by email: orders@signalchem.com
www.signalchem.com

FOR IN VITRO RESEARCH PURPOSES ONLY. NOT INTENDED FOR USE IN HUMAN OR ANIMALS.