

Anti-Phospho-RSK1 (Ser732)

Rabbit Polyclonal Antibody

Catalog # R15-65R

Lot # B3216-68

Cited Applications

ELISA, WB

Ideal working dilutions for each application should be empirically determined by the investigator.

Specificity

Recognizes the human p90 RSK1 protein phosphorylated at Serine 732

Cross Reactivity

Human, Mouse, Rat, Horse, Bovine and Dog

Host/Isotype/Clone#

Rabbit, IgG

Immunogen

The antibody was produced against synthesized peptide corresponding to a region near the C-Terminal of the human RSK1 protein

Formulation

0.02 M Potassium Phosphate, 0.15 M Sodium Chloride, pH 7.2 + 0.01% (w/v) Sodium Azide

Stability

1yr at -20°C from date of shipment

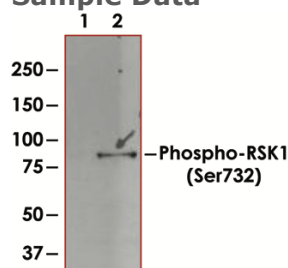
Scientific Background

RSK1 is a member of the RSK (ribosomal S6 kinase) family that are growth factor-regulated serine/threonine kinases. RSK1 contains 2 nonidentical kinase catalytic domains and phosphorylates various substrates, including members of the mitogen-activated kinase (MAPK) signalling pathway. RSK1 encodes a predicted 735-amino acid protein containing 2 distinct consensus ATP-binding site sequences. RSK1 transcript is present in lymphocytes, skeletal muscle, liver, and adipose tissue (1). RSKs are implicated in the activation of the mitogen-activated kinase (MAPK) cascade and the stimulation of cell proliferation and differentiation (2).

References:

1. Moller, D E. et al: Human rsk isoforms: cloning and characterization of tissue-specific expression. Am. J. Physiol. 266: C351-C359, 1994.
2. Gross, S D. et al: Induction of metaphase arrest in cleaving Xenopus embryos by the protein kinase p90(Rsk). Science 286: 1365-1367, 1999.

Sample Data



Western blot using affinity purified Anti-Phospho-RSK1 (Ser732) (1:1000) shows detection of a band ~90 kDa in size corresponding to phosphorylated p90 RSK1 (arrowhead) in EGF stimulated (lane 2) HEK293T cell lysates prepared from cells grown in the absence of serum for 12 h. No staining is observed in similarly prepared lysates derived from unstimulated (control) cells (lane 1).

Anti-Phospho-RSK1 (Ser732)

Rabbit Polyclonal Antibody

Catalog # R15-65R

Lot # B3216-68

Purification Immunoaffinity chromatography

Stability 1yr at -20°C from date of shipment

Storage & Shipping Store product at -20°C. For optimal storage, aliquot antibody into smaller quantities after centrifugation and store at recommended temperature. For optimal performance, avoid repeated handling and multiple

To place your order, please contact us by phone 1-(604)-232-4600, fax 1-604-232-4601 or by email: orders@signalchem.com
www.signalchem.com

FOR IN VITRO RESEARCH PURPOSES ONLY. NOT INTENDED FOR USE IN HUMAN OR ANIMALS.