

Anti-Cyclin D1

Rabbit Polyclonal Antibody

Catalog # C81-362R

Lot # B3216-40

Cited Applications

ELISA, IP, WB

Ideal working dilutions for each application should be empirically determined by the investigator.

Specificity

Recognizes the 40-45kDa Cyclin D1 protein

Cross Reactivity

Human

Host/Isotype/Clone#

Rabbit, Antiserum

Immunogen

The antibody was produced against full length fusion protein corresponding to the human Cyclin D1 gene sequence

Formulation

0.01% (w/v) Sodium Azide

Stability

1yr at -20° C from date of shipment

Scientific Background

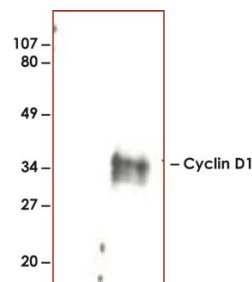
Cyclin D1 (also known as G1/S-specific cyclin D1, PRAD1 oncogene, BCL-1 oncogene, and PRAD1: parathyroid adenomatosis 1) is encoded by a gene that belongs to the highly conserved cyclin family. Cyclins are characterized by a dramatic periodicity in protein abundance throughout the cell cycle and function as regulators of CDK kinases. Different cyclins exhibit distinct expression and degradation patterns, which contribute to the temporal coordination of each mitotic event. Cyclin D1 forms a complex with and functions as a regulatory subunit of CDK4 or CDK6, whose activity is required for cell cycle G₁/S transition. This protein has been shown to interact with tumor suppressor protein Rb and the expression of this gene is regulated positively by Rb. Mutations, amplification and overexpression of this gene, which alters cell cycle progression, are observed frequently in a variety of tumors and may contribute to tumorigenesis.

References:

1. Xiong, Y., et al.: Human D-type cyclin. Cell. 1991; 65: 691-699.
2. Motokura, T., et al.: A novel cyclin encoded by a bcl1-linked candidate oncogene. Nature. 1991; 350: 512-515.
3. Lutzen, A., et al.: Cyclin D1 expression and cell cycle response in DNA mismatch repair-deficient cells upon methylation and UV-C damage. Exp. Cell Res. 2004; 292 (1): 123-134.
4. Pines J.: Cyclins and cyclin-dependent kinases: take your partners. Trends Biochem Sci. 1993; 18(6):195-7.
5. Xiong, Y., et al.: Human D-type cyclin. Cell. 1991; 65: 691-699.

To place your order, please contact us by phone 1-(604)-232-4600, fax 1-604-232-4601 or by email: orders@signalchem.com
www.signalchem.com

Sample Data



Western blot analysis using Anti-Cyclin D1 (1:500) to detect Human Cyclin D₁ present in asynchronous HN30 cell lysates. HN30 cells, are from head and neck cancer cells that over express cyclin B₁ and D₁.

Anti-Cyclin D1

Rabbit Polyclonal Antibody

Catalog #	C81-362R
Lot #	B3216-40
Purification	Delipidation and defibrination
Stability	1yr at -20° C from date of shipment
Storage & Shipping	Store product at -20° C. For optimal storage, aliquot antibody into smaller quantities after centrifugation and store at recommended temperature. For optimal performance, avoid repeated handling and multiple freeze/thaw cycles. Product shipped on ice packs.