

Anti-MOUSE, Rhodamine Conjugate

Goat Polyclonal Antibody

Catalog # M32-62FG

Lot # B3216-4

Cited Applications

ELISA, Flow Cytometry, IF Microscopy

Ideal working dilutions for each application should be empirically determined by the investigator.

Specificity

Recognizes IgG (H&L)

Cross Reactivity

Mouse

Host/Isotype/Clone#

Goat, IgG

Immunogen

The antibody was produced against mouse IgG whole molecule.

Formulation

0.02 M Potassium Phosphate, 0.15M Sodium Chloride, pH 7.2 + 0.01% (w/v) Sodium Azide

Stability

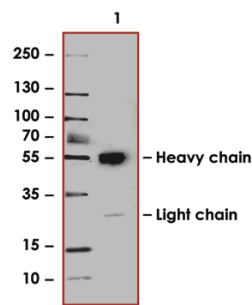
1yr at -20°C from date of shipment

Scientific Background

This product is designed for immunofluorescence microscopy, fluorescence based plate assays (FLISA) and fluorescent western blotting. This product is also suitable for multiplex analysis, including multicolor imaging, utilizing various commercial platforms.

References:

Sample Data



Western Blot of Anti-MOUSE, Rhodamine Conjugated (1:1000). Lane 1: Mouse IgG. Lane 2: none. Load: 50 ng per lane.

Anti-MOUSE, Rhodamine Conjugated

Goat Polyclonal Antibody

Catalog # M32-62FG

Lot # B3216-4

Purification Immunoaffinity chromatography

Stability 1yr at -20°C from date of shipment

Storage & Shipping Store product at -20°C. For optimal storage, aliquot antibody into smaller quantities after centrifugation and store at recommended temperature. For optimal performance, avoid repeated handling and multiple freeze/thaw cycles. Product shipped on ice packs.