

Anti-Phospho-APC3 (Thr 244)

Rabbit Polyclonal Antibody

Catalog # **A89-365R**

Lot # B3216-30

Cited Applications

ELISA, IP, WB

Ideal working dilutions for each application should be empirically determined by the investigator.

Specificity

Recognizes the Cdc27 protein phosphorylated at Threonine 244

Cross Reactivity

Human

Host/Isotype/Clone#

Rabbit, IgG

Immunogen

The antibody was produced against synthesized peptide corresponding to amino acids 239-240 of Human Cdc27 protein.

Formulation

0.02 M Potassium Phosphate, 0.15 M Sodium Chloride, pH 7.2 + 0.01% (w/v) Sodium Azide

Stability

1yr at -20°C from date of shipment

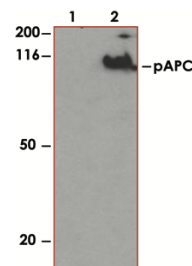
Scientific Background

Cdc27 (also known as cell division cycle protein 27 homologue, CDC27Hs and H-NUC) shares strong similarity with *Saccharomyces cerevisiae* protein Cdc27, and the gene product of *Schizosaccharomyces pombe* nuc 2. Cdc27 is a component of anaphase-promoting complex (APC), which is composed of eight protein subunits and highly conserved in eukaryotic cells. APC catalyzes the formation of cyclin B-ubiquitin conjugate that is responsible for the ubiquitin-mediated proteolysis of B-type cyclins. This protein and 3 other members of the APC complex contain the TPR (tetra-trico-peptide repeat), a protein domain important for protein-protein interaction. This protein was shown to interact with mitotic checkpoint proteins including Mad2, p55CDC and BUBR1, and thus may be involved in controlling the timing of mitosis. Cdc27 has a nuclear localization.

References:

1. Gabellini, D., et al.: Early mitotic degradation of the homeoprotein HOXC10 is potentially linked to cell cycle progression. *EMBO J.* 2003; 22 (14); 3715-3724.
2. Topper, L.M., et al. The dephosphorylated form of the anaphase-promoting complex protein Cdc27/Apc3 concentrates on kinetochores and chromosome arms in mitosis. *Cell Cycle.* 2002; 1 (4); 282-292.
3. Wassmann, K., et al.: Mad2 transiently associates with an APC/p55Cdc complex during mitosis. *Proc. Natl. Acad. Sci. U.S.A.* 1988; 95 (19); 11193-11198.

Sample Data



Western blot using Affinity Purified anti-Phospho-APC3 (Thr244) (1:500) to detect phosphorylated human CDC27 (arrowhead). Lane 1 shows lysate from asynchronous cells. Lane 2 shows lysate from cells treated with nocodazole. Each lane contains approximately 30µg of HeLa whole cell lysates.

Anti-phospho-c-KIT (Tyr936)

Rabbit Polyclonal Antibody

Catalog #	A89-365R
Lot #	B3216-30
Purification	Immunoaffinity chromatography
Stability	1yr at -20°C from date of shipment
Storage & Shipping	Store product at -20°C. For optimal storage, aliquot antibody into smaller quantities after centrifugation and store at recommended temperature. For optimal performance, avoid repeated handling and multiple freeze/thaw cycles. Product shipped on ice packs.

To place your order, please contact us by phone 1-(604)-232-4600, fax 1-604-232-4601 or by email: orders@signalchem.com
www.signalchem.com

FOR IN VITRO RESEARCH PURPOSES ONLY. NOT INTENDED FOR USE IN HUMAN OR ANIMALS.