

## Anti-phospho-AKT1/2/3 (Thr308)

Mouse Monoclonal Antibody

Catalog # **A16-65M**

Lot # B3216-13

### Cited Applications

ELISA, IHC, WB

Ideal working dilutions for each application should be empirically determined by the investigator.

### Specificity

Recognizes the AKT protein phosphorylated at Threonine 308.

### Cross Reactivity

Human, Mouse, Rat and Monkey

### Host/Isotype/Clone#

Mouse, IgG

### Immunogen

The antibody was produced against synthesized peptide corresponding to residues surrounding Thr 308 of Human AKT1 protein.

### Formulation

0.02 M Potassium Phosphate, 0.15 M Sodium Chloride, pH 7.2 + 0.01% (w/v) Sodium Azide

### Stability

1yr at -20°C from date of shipment

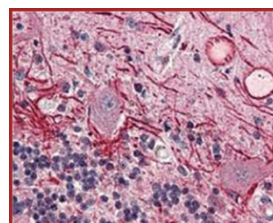
### Scientific Background

AKT1/PKBα is a serine/threonine kinase that belongs to the AKT family. AKT1 is activated in cells in response to diverse stimuli such as hormones, growth factors and extracellular matrix components and is involved in glucose metabolism, transcription, survival, cell proliferation, angiogenesis, and cell motility (1). AKT1 is frequently overexpressed and active in many types of human cancers including cancers of colon, breast, brain, pancreas and prostate as well as lymphomas and leukemias (2).

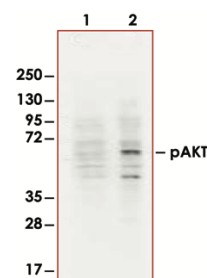
### References:

1. Coffey, P.J. et al: Protein kinase B (c-Akt): a multifunctional mediator of phosphatidylinositol 3-kinase activation. *Biochem J.* 1998 Oct 1; 335 ( Pt 1):1-13.
2. Anderson, K.E. et al: Translocation of PDK-1 to the plasma membrane is important in allowing PDK-1 to activate protein kinase B. *Curr Biol.* 1998 Jun 4;8(12): 684-91.

### Sample Data



Immunohistochemical analysis of formalin fixed, paraffin embedded human brain cerebellum tissue (40x) using Anti-Phospho-AKT1/2/3 (Thr308)



Western Blot of Anti-Phospho-AKT1/2/3 (Thr308) (1:4,000). Lane 1: non-phosphorylated AKT in untreated cells. Lane 2: phosphorylated AKT on PDGF stimulated NIH/3T3 cell lysates. Load: 15 µg per lane.

## Anti-phospho-AKT1/2/3 (Thr308)

Mouse Monoclonal Antibody

Catalog # **A16-65M**  
Lot # **B3216-13**  
Purification **Protein A Chromatography**  
Stability **1yr at -20°C from date of shipment**  
Storage & Shipping **Store product at -20°C. For optimal storage, aliquot antibody into smaller quantities after centrifugation and store at recommended temperature. For optimal performance, avoid repeated handling and multiple freeze/thaw cycles. Product shipped on ice packs.**

To place your order, please contact us by phone 1-(604)-232-4600, fax 1-604-232-4601 or by email: [orders@signalchem.com](mailto:orders@signalchem.com)  
[www.signalchem.com](http://www.signalchem.com)

**FOR IN VITRO RESEARCH PURPOSES ONLY. NOT INTENDED FOR USE IN HUMAN OR ANIMALS.**