

EED Protein

Full-length recombinant protein expressed in E. coli cells

Catalog # E310-30H

Lot # B2105-6

Product Description

Recombinant full-length human EED was expressed in E.coli cells using an N-terminal His tag. The gene accession number is [BC068995](#).

Gene Aliases

HEED, WAIT1

Formulation

Recombinant protein stored in 50mM sodium phosphate, pH 7.0, 300mM NaCl, 150mM imidazole, 0.1mM PMSF, 0.25mM DTT, 25% glycerol.

Storage and Stability

Store product at -70°C . For optimal storage, aliquot target into smaller quantities after centrifugation and store at recommended temperature. For most favorable performance, avoid repeated handling and multiple freeze/thaw cycles.

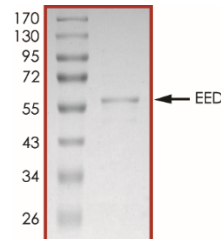
Scientific Background

The embryonic ectoderm development protein (EED), a WD40 domain-containing protein, is the regulatory subunit of polycomb repressive complex 2 (PRC2). PRC2 catalyzes the monomethylation, dimethylation, and trimethylation of histone H3 Lys27 (H3K27) and acts as a central epigenetic regulator that marks the repressive chromatin domain. EED binds to the tri-methylated lysine 27 of the histone H3 (H3K27me3), and through which stimulates the activity of PRC2 allosterically.

References

- Li L, et al: Discovery and Molecular Basis of a Diverse Set of Polycomb Repressive Complex 2 Inhibitors Recognition by EED. PLoS One. 2017 Jan 10;12(1):e0169855.
- Ueda T, et al: Propagation of trimethylated H3K27 regulated by polycomb protein EED is required for embryogenesis, hematopoietic maintenance, and tumor suppression. Proc Natl Acad Sci U S A. 2016 Sep 13;113(37):10370-5.

Purity



The purity was determined to be **>90%** by densitometry. Approx. MW **57kDa**.

EED Protein

Full-length recombinant protein expressed in Sf9 cells

Catalog #	E310-30H
Lot #	B2105-6
Purity	>90%
Concentration	0.1 µg/µl
Stability	1yr at -70°C from date of shipment
Storage & Shipping	Store product at -70°C . For optimal storage, aliquot target into smaller quantities after centrifugation and store at recommended temperature. For most favorable performance, avoid repeated handling and multiple freeze/thaw cycles. Product shipped on dry ice.

To place your order, please contact us by phone 1-(604)-232-4600, fax 1-604-232-4601 or by email: orders@signalchem.com
www.signalchem.com

FOR IN VITRO RESEARCH PURPOSES ONLY. NOT INTENDED FOR USE IN HUMAN OR ANIMALS.