

## NRBP1 Protein

Full-length recombinant human protein expressed in Sf9 cells

**Catalog # N24-34G**

Lot # A1255-3

### Product Description

Recombinant full-length human NRBP1 was expressed by baculovirus in Sf9 insect cells using an N-terminal GST tag. This gene accession number is [BC001221](#).

### Gene Aliases

BCON3, MADM, MUDPNP

### Formulation

Recombinant protein stored in 50mM Tris-HCl, pH 7.5, 150mM NaCl, 10mM glutathione, 0.1mM EDTA, 0.25mM DTT, 0.1mM PMSF, 25% glycerol.

### Storage and Stability

Store product at -70°C. For optimal storage, aliquot target into smaller quantities after centrifugation and store at recommended temperature. For most favorable performance, avoid repeated handling and multiple freeze/thaw cycles.

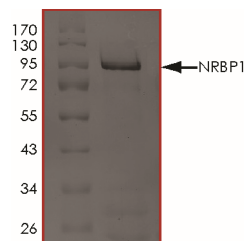
### Scientific Background

NRBP1 or nuclear receptor binding protein 1 is a putative adaptor protein which is highly expressed in testis and placenta and lowest levels in hippocampus and thymus (1). The expression of NRBP1 is up-regulated during the progression of prostate cancer and that high NRBP1 expression is linked with poor prognosis and enhanced tumor cell growth (2). NRBP may be an important negative regulator of Jab1-mediated functions such as gene transcription and tumor progression.

### References

1. Hooper, J.D. et.al: Cloning of the cDNA and localization of the gene encoding human NRBP, a ubiquitously expressed, multidomain putative adapter protein. *Genomics* 66: 113-118, 2000.
2. Ruiz C.et.al: High NRBP1 expression in prostate cancer is linked with poor clinical outcomes and increased cancer cell growth. *Prostate*. 2012 Nov;72(15):1678-87.

### Purity



The purity of NRBP1 was determined to be **>90%** by densitometry. Approx. MW **92 kDa**.

## NRBP1 Protein

Full-length recombinant human protein expressed in Sf9 cells

Catalog #	N24-34G
Lot #	A1255-3
Purity	>90%
Concentration	0.1 µg/µl
Stability	1yr at -70°C from date of shipment
Storage & Shipping	Store product at -70°C. For optimal storage, aliquot target into smaller quantities after centrifugation and store at recommended temperature. For most favorable performance, avoid repeated handling and multiple freeze/thaw cycles. Product shipped on dry ice.

To place your order, please contact us by phone 1-(604)-232-4600, fax 1-604-232-4601 or by email: [orders@signalchem.com](mailto:orders@signalchem.com)  
[www.signalchem.com](http://www.signalchem.com)

**FOR IN VITRO RESEARCH PURPOSES ONLY. NOT INTENDED FOR USE IN HUMAN OR ANIMALS.**